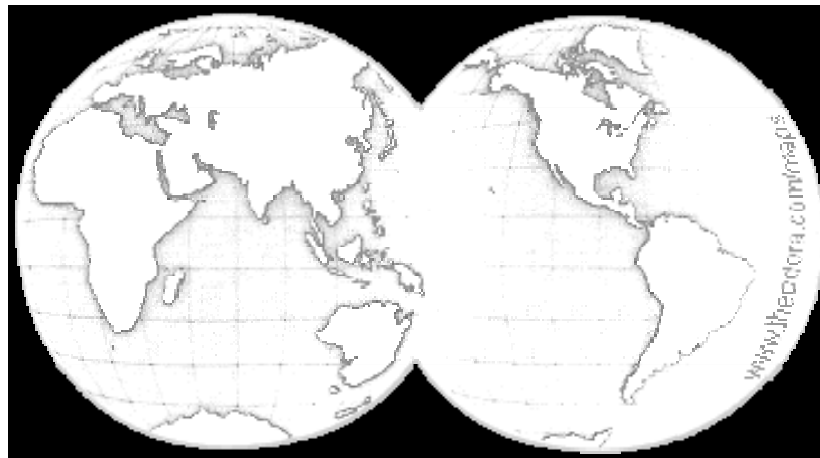


ANNUAL ENROLLMENT REPORT

INTERNATIONAL STUDENTS & SCHOLARS

University of Houston



FALL SEMESTER 2009

PREPARED BY

**INTERNATIONAL STUDENT AND SCHOLAR SERVICES OFFICE
DIVISION OF STUDENT AFFAIRS**

University of Houston International Student and Scholar Services Office

Staff

Anita Gaines	Director
Jin Zhang	Associate Director
Amanda Majure	SEVIS Compliance Coordinator
Amy Peña	International Student Counselor
Ida Thompson	International Student Counselor
Dale Hamilton	International Friendship Program Coordinator
Emily Estill	Office Assistant 2
Gina McCready	Office Assistant 2
Jackeice Chambers	Office Assistant 2
Lia Verhoef	Administrative Coordinator
Mandar Kulkarni	Graduate Assistant

Report compiled by: *Amanda Majure & Mandar Kulkarni*

Table of Contents

I.	ISSSO Mission Statement and Definitions Used in this Report	2
II.	Student and Exchange Visitor Information System (SEVIS) Report	3
III.	Enrollment Summary	4
IV.	Non-Immigrant Enrollment	5
V.	Profile of First Time Enrolled Non-Immigrants	6
VI.	Non-Immigrant Enrollment Compositions	7
VII.	Non-Immigrant Enrollment by Country and Level of Study	8
VIII.	Percentage of Non-Immigrant Enrollment by Geographic Region	9
IX.	Country Profiles: Fall 2009 Enrollment	10
	India	10
	China, Vietnam, Korea	11
	Nigeria, Saudi Arabia, Taiwan	12
	Pakistan, Turkey, Canada	13
	Mexico, Venezuela, Colombia	14
	Iran, Indonesia, Angola	15
	United Kingdom, Brazil, Philippines	16
	Sri Lanka, Malaysia, Thailand	17
	Japan, Hong Kong, Germany	18
X.	Enrollment by Geographic Region	19
	Africa	19
	Asia	20
	Middle East	20
	Europe	21
	Latin America	22
	North America	23
Oceania	23	
XI.	25 Year Non-Immigrant Enrollment Trends	24
XII.	Enrollment Distribution by Level of Study	25
XIII.	International Student to U.S. Student Enrollment by College	26
XIV.	Non-Immigrant Enrollment Distribution by College	27
XV.	Non-Immigrant Student Enrollment by College and Origin	28
XVI.	F-1 Employment Statistics: Curricular Practical Training (CPT)	31
XVII.	F-1 Employment Statistics: Optional Practical Training (OPT)	32
XVIII.	2009 Exchange Visitor Program Summary	33
XIX.	2009 Exchange Visitor Country of Origin	34
XX.	Language & Culture Center Enrollment: Fall 2009	35
XXI.	Non-Immigrant International Student Enrollment 2000-2009	36

Mission Statement

- Provide for the special needs of 4216 international students, research scholars, foreign
- faculty, and their dependents as related to their status as non-immigrants of the United States.
 - Meet the University of Houston's responsibility for compliance with the laws and regulations of the U.S. government.
 - Promote internationalization at the University of Houston through our services and programs.

Definitions Used in this Report

Non-Immigrant An individual authorized to reside in the United States temporarily.

Immigrant An individual authorized to reside in the United States permanently.

Selected Visa Categories

A-1/A-2 Employees of foreign governments on official business and their dependents

E-1 Treaty trader

E-2 Treaty investor

F-1 An individual in the U.S. engaging in a full course of academic study or language training

F-2 Dependent of F-1

G-(1-4) Representatives of international organizations

G-5 Personal employee of G-1, G-2, G-3 or G-4

H-1B Individual temporarily in the U.S. to perform services in a specialty occupation

H-4 Dependent of H-1B

I Foreign media representative

J-1 Student, Professor, Research Scholar, Short-term Scholar or Specialist

J-2 Dependent of J-1

K-1 Fiancé(e) of U.S. citizen

K-2 Minor child of K-1

K-3 Spouse of U.S. citizen

K-4 Minor child of K-3

L-1 Intracompany Transferee

L-2 Dependent of L-1

O-1 Worker of extraordinary ability

R-1 Religious worker

R-2 Dependent of R-1

TN Trade NAFTA professionals from Canada and Mexico

TD Dependent of TN

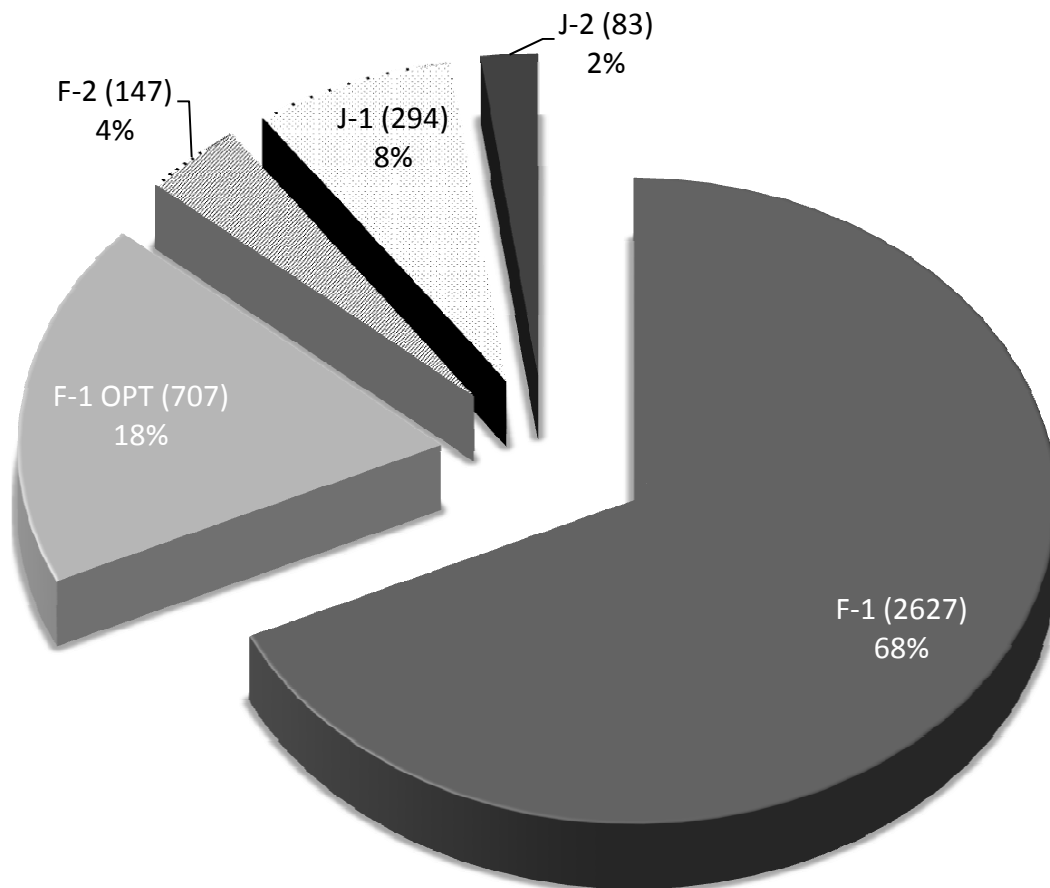
TPS Temporary Protected Status

Student & Exchange Visitor Information System (SEVIS) Report

What is SEVIS?

SEVIS is a U.S. government internet-based system that tracks current information on non-immigrant students (F and M visas), exchange visitors (J visa), and their dependents (F-2, M-2, and J-2). SEVIS allows schools and program sponsors to transmit electronic information and event notifications via the internet to the Department of Homeland Security (DHS) and Department of State (DOS) throughout the student's/exchange visitor's stay in the United States. SEVIS reflects changes in international student or exchange visitor status, admission at the Port of Entry (POE), changes of address, changes in program of study, employment authorizations, and other events.

The International Student and Scholar Services Office (ISSSO) was responsible for tracking and reporting on **3858** F and J visa students, scholars, and their dependents for the Fall 2009 semester.

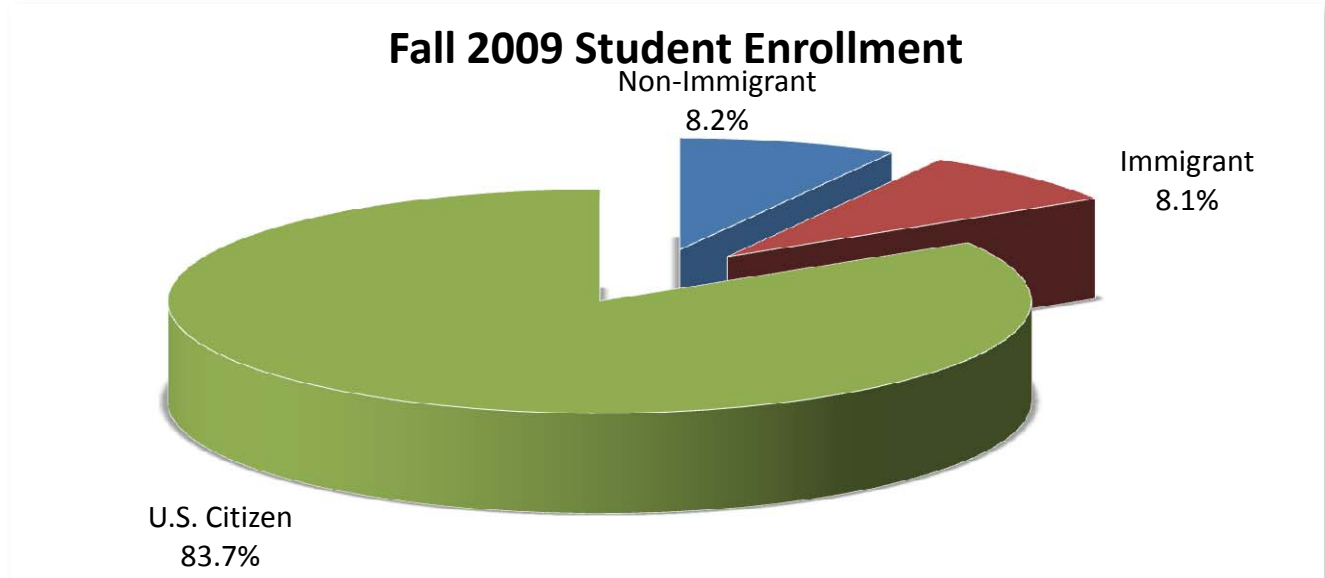


University of Houston Fall 2009 Enrollment Summary

Student Population	2008 Total	2009 Total	Growth %
Non-Immigrant	2,880	3,034	5.3
Immigrant	3,002	2,991	-0.4
U.S. Citizen	30,245	30,975	2.4
Total	36,127	37,000	2.4

Fall 2009 Student Enrollment by Percentage

Non-Immigrant	Immigrant	U.S. Citizen	Total
3,034	2,991	30,975	37,000
8.2%	8.1%	83.7%	100%



Additional Non-Immigrants with UH Affiliations

Additional Selected Categories	Non-Immigrants
Language and Culture Center Students (ESL)	335
Exchange Visitor Program Participants & Dependents (not enrolled)	328
F-1 Alumni on Optional Practical Training (OPT)	707
F-2 Dependents	147
Non-Immigrant Students Enrolled at UH	3034
Grand Total Non-Immigrants	4551

Total Countries Represented: 132*

* Total country count includes non-immigrants enrolled at UH Main Campus, Language and Culture Center students, F-1 alumni on optional practical training (OPT), and UH sponsored exchange visitors.

Fall 2009 Non-Immigrant Enrollment

By Non-Immigrant Visa Categories

Visa Categories	Visa	2009	2008	Growth
Full-Time Student	F-1	2627	2437	7.80%
Temporary Worker in Specialty Occupation	H-1B	99	107	-7.48%
Dependent of H-1B	H-4	106	99	7.07%
Exchange Visitor (Student)	J-1	32	31	3.23%
Dependent of J-1 (Studying at UH)	J-2	10	8	25.00%
Intra-Company Transferee	L-1	20	13	53.85%
Dependent of L-1	L-2	56	51	9.80%
Permanent Residency Pending	PRP	44	67	-34.33%
Other: A-1, A-2, E-1, E-2, G-1, K-3, O-3, R-1, S, TD, TN, & TPS		40	67	-40.30%
Total Non-Immigrants		3034	2880	5.35%

Top 10 Countries of Origin

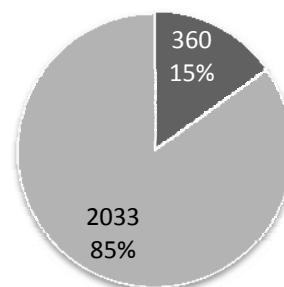
Rank	Country	2009	2008	Growth
1	India	825	775	6.5%
2	China	459	376	22.1%
3	Vietnam	148	134	10.4%
4	South Korea	121	128	-5.5%
5	Nigeria	105	106	-0.9%
6	Saudi Arabia	87	81	7.4%
6	Taiwan	87	83	4.8%
7	Pakistan	76	80	-5.0%
8	Turkey	70	70	0.0%
9	Canada	63	60	5.0%
10	Mexico	62	75	-17.3%

Degrees Awarded: Non-Immigrants

Level	Awarded	Percentage
Bachelors	109	30.28%
Masters	214	59.44%
Doctoral	37	10.28%
Totals	360	100.00%

Fall 2009 Degrees Awarded

- Non-Immigrants
- U.S. Citizens, Immigrants, etc.



F-1 Student Employment Overview

Type of Curricular Practical Training (CPT)	Part-Time	Full-Time	Total
Cooperative Education Program (COOP)	161	121	282
Dissertation/Thesis	16	3	19
Required Course	50	31	81
2009 Total CPT Participation		227	382

First Time Enrolled Non-Immigrants: Fall 2009

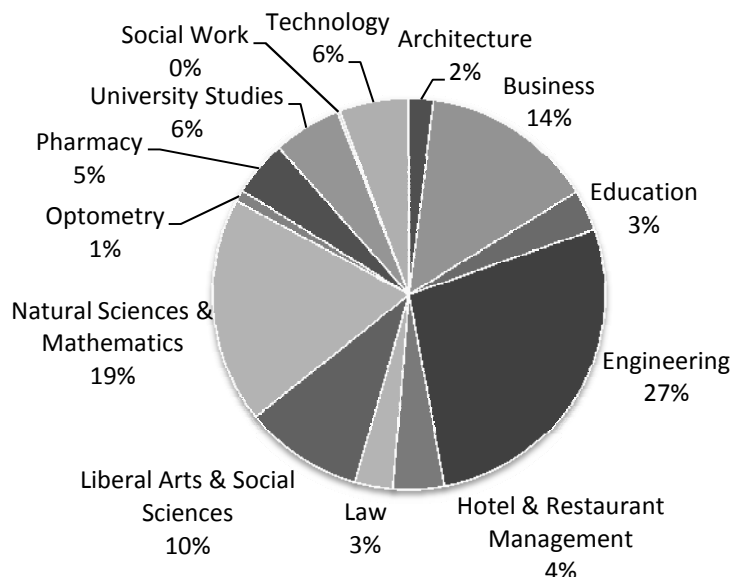
By Level**	2009	2008	Percent Change
Undergraduate	268	375	-28.53
Graduate	557	537	3.72
Total	825	912	-9.54

**International students who attended UH for the first time in Fall 2009/2008.

By Country	2009	2008	Percent Change
India	228	268	-14.93
China, People's Rep. of	150	115	30.43
South Korea	33	34	-2.94
Japan	9	2	350.00
Indonesia	10	6	66.67
Brazil	12	9	33.33
Europe (including Turkey & Cyprus)	82	93	-11.83
Saudi Arabia	13	24	-45.83
Iraq	2	2	0.00
Middle East (excluding Iraq/Saudi Arabia)	23	21	9.52

STEM Fields	2009	2008	Percent Change
Biological and Medical Sciences (CIP Code Family 26.xxxx)	23	39	-41.03
Computer Science (CIP Code Family 11.xxxx)	61	88	-30.68
Engineering (CIP Code Family 14.xxxx)	220	238	-7.56
Engineering Technologies (CIP Code Family 15.xxxx)	12	13	-7.69
Mathematics and Statistics (CIP Code Family 27.xxxx)	9	10	-10.00
Physical Sciences (CIP Code Family 40.xxxx)	64	49	30.61
Total	389	437	-10.98

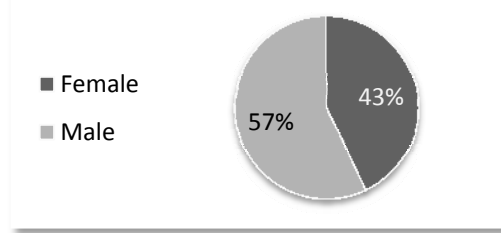
First Time Non-Immigrant Enrollment by College



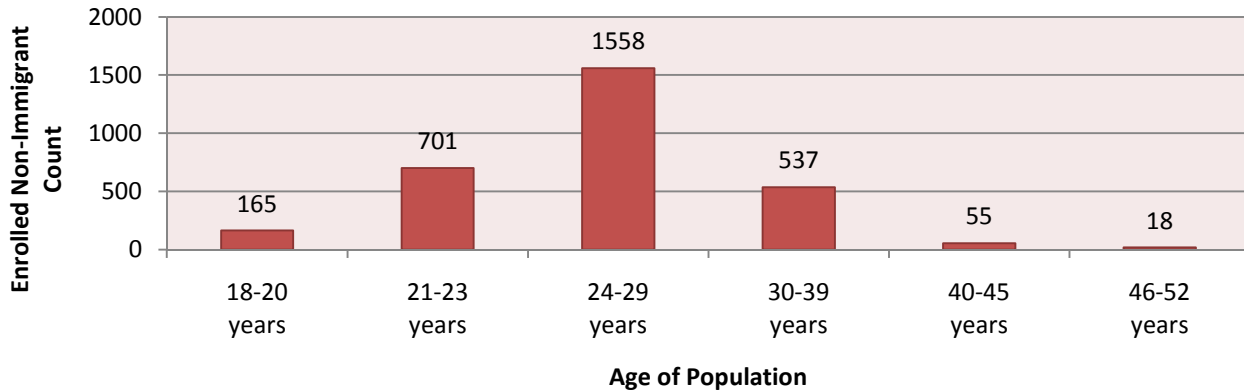
Non-Immigrant Enrollment Compositions

By Gender

Gender	UG	G	Total
Female	555	748	1303
Male	628	1103	1731
Grand Total	1183	1851	3034

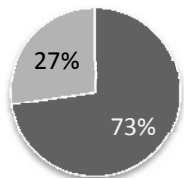


By Age



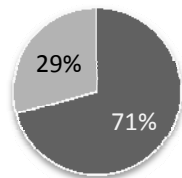
By New/Continuing Enrollment

Total Enrollment



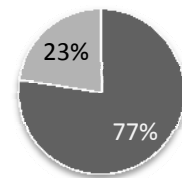
■ Continuing ■ New/Transfer

Undergraduate Enrollment



■ Continuing ■ New/Transfer

Graduate Enrollment



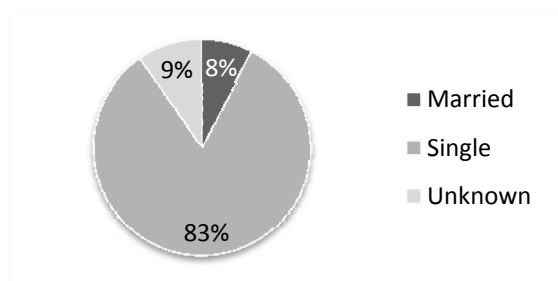
■ Continuing ■ New/Transfer

Degree Level	Continuing	New/Transfer	Total
Undergraduate	915	268	1183
Graduate	1294	557	1851
Grand Total	2209	825	3034

*For the purposes of this report, Special Professional degrees are considered graduate education and Post Baccalaureate programs are included in undergraduate totals.

By Marital Status

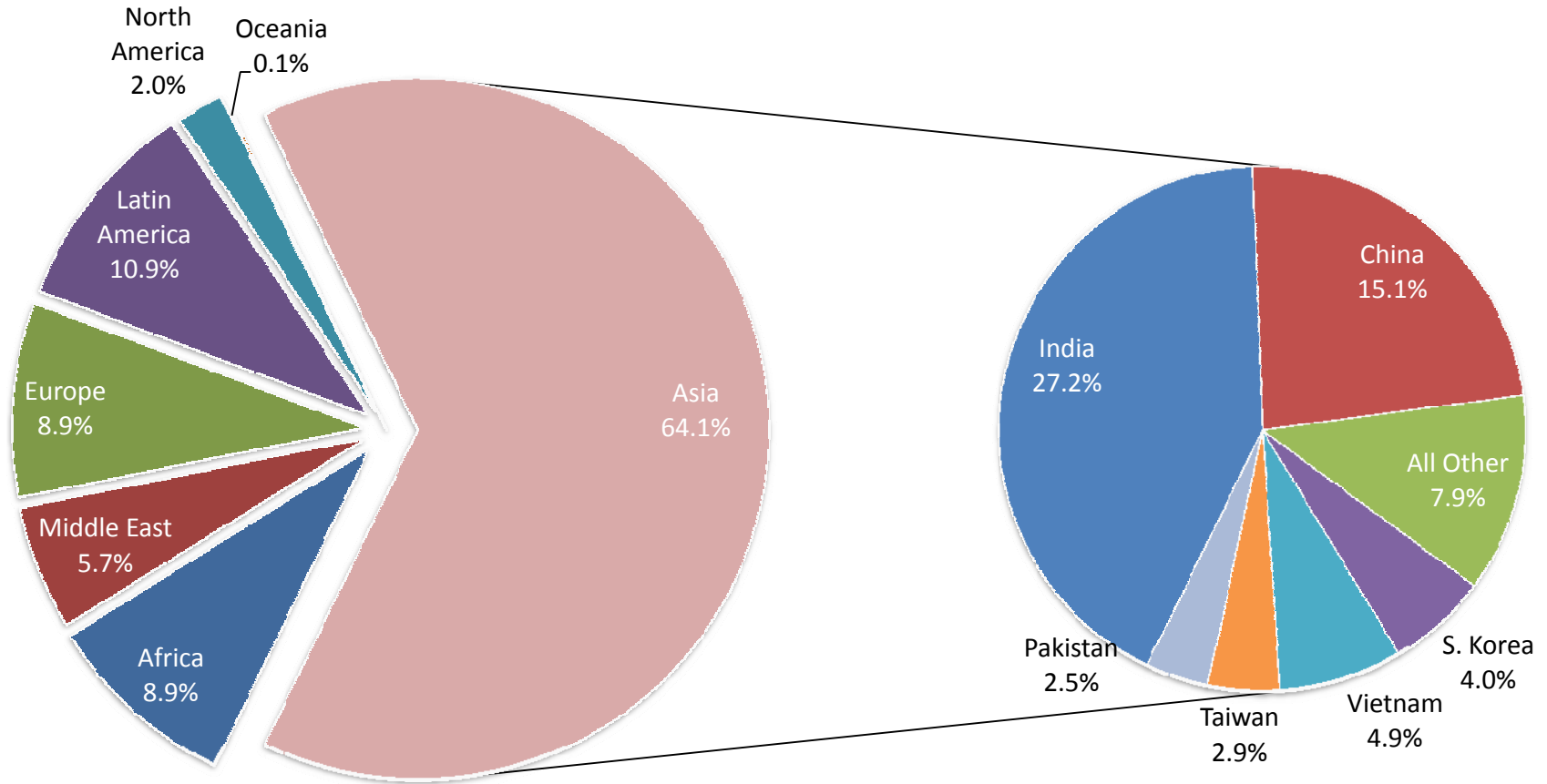
Marital Status	Total	Percentage
Married	233	7.7%
Single	2508	82.7%
Unknown	293	9.7%
Grand Total	3034	100.0%



Fall 2009 Non-Immigrant Enrollment by Country and Level of Study

Country	UG	PB	G	Sp. Prof	Total	Country	UG	PB	G	Sp. Prof	Total
1 Afghanistan	1				1	64 Kyrgyzstan			1		1
2 Albania	2		2		4	65 Latvia	1		3		4
3 Algeria			3		3	66 Lebanon	9	2	6		17
4 Angola	28		1		29	67 Libya		2	5		7
5 Anguilla	1				1	68 Lithuania	1		1		2
6 Argentina	3		10		13	69 Macedonia			1		1
7 Australia	3				3	70 Malaysia	15	3	7		25
8 Azerbaijan	5		6		11	71 Mali	4				4
9 Bahamas	4				4	72 Mauritania	1				1
10 Bangladesh	6		2		8	73 Mexico	40	2	19	1	62
11 Belgium	1			1	2	74 Moldova			1		1
12 Belize	3		1		4	75 Mongolia	2				2
13 Benin	1				1	76 Morocco	5		3		8
14 Bermuda	1				1	77 Myanmar/Burma	1		1		2
15 Bolivia	2			1	3	78 Namibia				1	1
16 Botswana			1		1	79 Nepal	10		5		15
17 Brazil	18	1	3	6	28	80 Netherlands	4		4		8
18 Bulgaria	2		5		7	81 Nicaragua	1				1
19 Burkina Faso	3				3	82 Nigeria	58	4	39	4	105
20 Cambodia	1		1		2	83 Norway	1		1		2
21 Cameroon	5		2	2	9	84 Pakistan	56		20		76
22 Canada	34	2	20	7	63	85 Palestinian Territories	1				1
23 Cayman Islands				1	1	86 Panama	2				2
24 Chad	1				1	87 Paraguay	1				1
25 Chile	1				1	88 Peru	12	2	5		19
26 China	97	9	345	8	459	89 Philippines	6		22		28
27 Colombia	25	1	21	2	49	90 Poland	4		1		5
28 Costa Rica	2				2	91 Portugal	1				1
29 Cote D'Ivoire/Ivory Coast	7		1		8	92 Qatar	2			1	3
30 Croatia			4	1	5	93 Romania	2		5		7
31 Cyprus	1	1			2	94 Russia	6	1	8	1	16
32 Denmark	1		3		4	95 Saudi Arabia	77	2	8		87
33 Dominica	1				1	96 Senegal	1				1
34 Dominican Republic	3		1		4	97 Serbia			4		4
35 Ecuador	8		3		11	98 Singapore	5	1	5		11
36 Egypt	5		9		14	99 Slovakia	1				1
37 El Salvador	7				7	99 Slovenia	1				1
38 Ethiopia	4		1		5	100 South Africa	3		2		5
39 Finland	3	1			4	101 South Korea	57	4	54	6	121
40 France	10	1	3	1	15	102 Spain	1		5	1	7
41 Gabon	4		3		7	103 Sri Lanka	2	1	25		28
42 Georgia			2		2	104 St. Vincent & the Grenadines		1			1
43 Germany	11		9		20	105 Swaziland			1		1
44 Ghana	5		1	1	7	106 Sweden	1		1		2
45 Greece	1	1	6		8	107 Switzerland	1				1
46 Guatemala	4				4	108 Syria	3		1		4
47 Guinea	1				1	109 Taiwan	25	1	57	4	87
48 Honduras	3		3		6	110 Tanzania	9				9
49 Hong Kong	15		8		23	111 Thailand	2		22		24
50 Hungary	2		1		3	112 Togo			1		1
51 India	77	10	733	5	825	113 Trinidad & Tobago	5		6	1	12
52 Indonesia	22	1	7		30	114 Tunisia	2		12		14
53 Iran	2	1	29		32	115 Turkey	8		62		70
54 Iraq	2		1	1	4	116 Turkmenistan			1		1
55 Ireland	2		1		3	117 Uganda			1		1
56 Israel	5		3		8	118 Ukraine		1	10	1	12
57 Italy	4		3		7	119 United Arab Emirates	1	1			2
58 Jamaica	1		1		2	120 United Kingdom	15	1	12	1	29
59 Japan	7	4	11	2	24	121 Venezuela	34	2	22	1	59
60 Jordan	3		9		12	122 Vietnam	113	4	29	2	148
61 Kazakstan	9	2	3		14	124 Zambia	2				2
62 Kenya	13	1	3		17	125 Zimbabwe	1		3		4
63 Kuwait	3				3						
Non-Immigrant Enrollment Grand Total						1112	71	1787	64	3034	
Total Countries Represented by Non-Immigrant Enrollment						125					

Fall 2009 Non-Immigrant Enrollment by Region



Non-Immigrant Enrollment Country of Origin Profiles

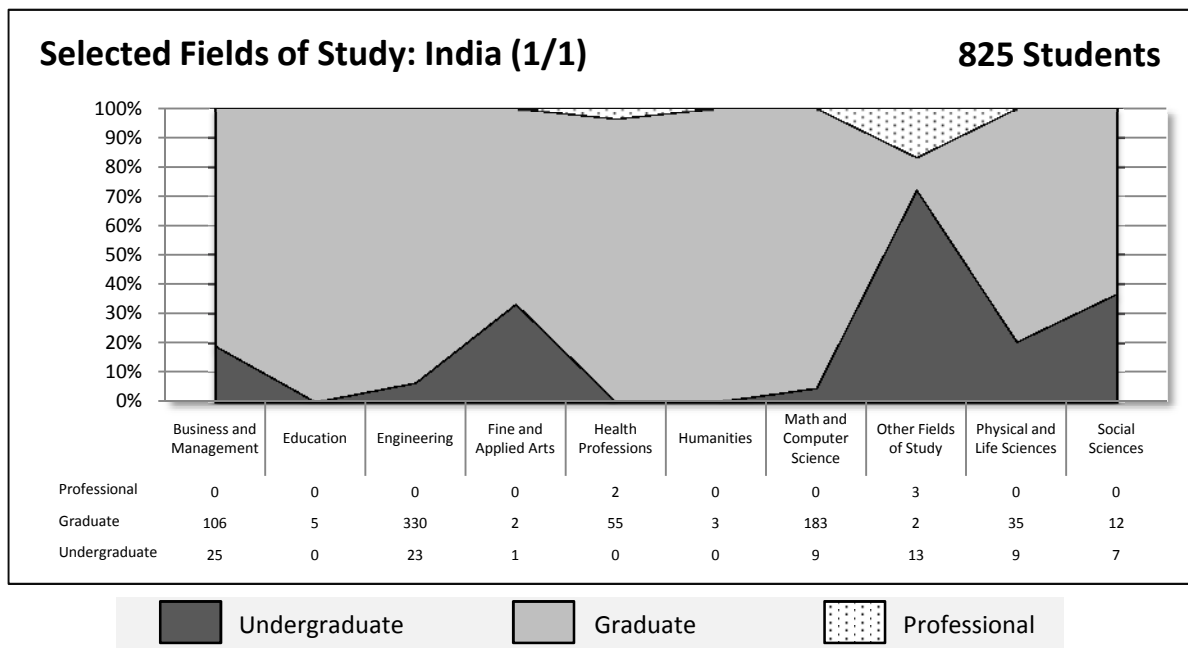
Top 25 Ranked Countries of Origin at University of Houston

Profiles Summary

The following pages (10-18) contain graphics which depict non-immigrant enrollment counts by country of origin for the Fall 2009 semester at University of Houston. Each area chart identifies the total number of non-immigrants enrolled by field of study. Field of study designations were determined based on the Classification of Instructional Program (CIP) Code associated with the student's primary major for the Fall 2009 semester. The chart further identifies the percentage of non-immigrant enrollment per field of study by degree level. The three degree levels identified in the following charts are: undergraduate, graduate, and special programs. Undergraduate counts include non-immigrants classified as pursuing post-baccalaureate programs at University of Houston. Special program counts include non-immigrants pursuing degrees at UH in our professional programs: Architecture, Law, Optometry, Pharmacy. Each country profile also contains the total number of non-immigrants enrolled at UH from that country for the Fall 2009 semester. The charts also contain the total number of non-immigrants enrolled as well as identify the country's ranking at UH and nationally. The country of origin rank is notated next to the country's name in each chart as indicated in the example below:

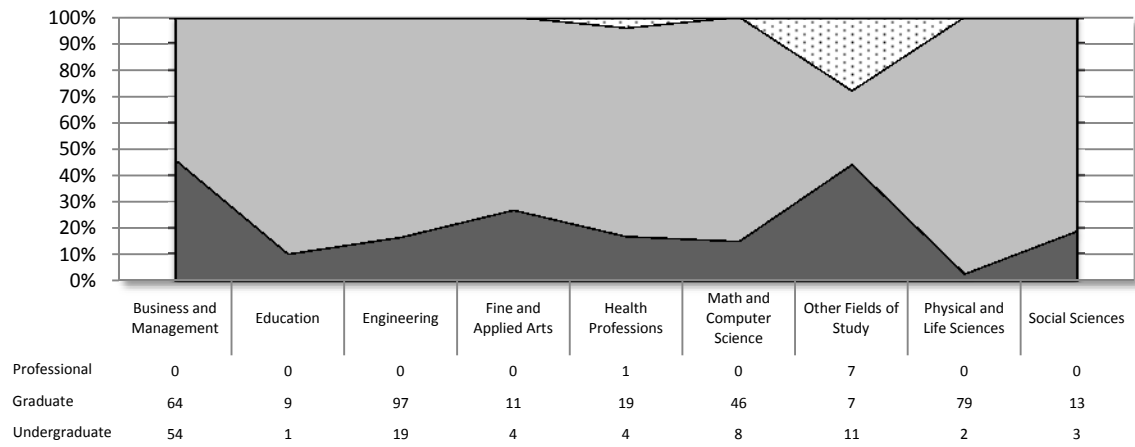
Country Name (UH Non-Immigrant Enrollment Ranking/U.S. National Ranking)

Countries not nationally ranked in the top 25 countries of origin are indicated in the charts with a dash (-) rather than ranking. National rankings are obtained from the *Open Doors 2009 Report* published by Institute of International Education (IIE).



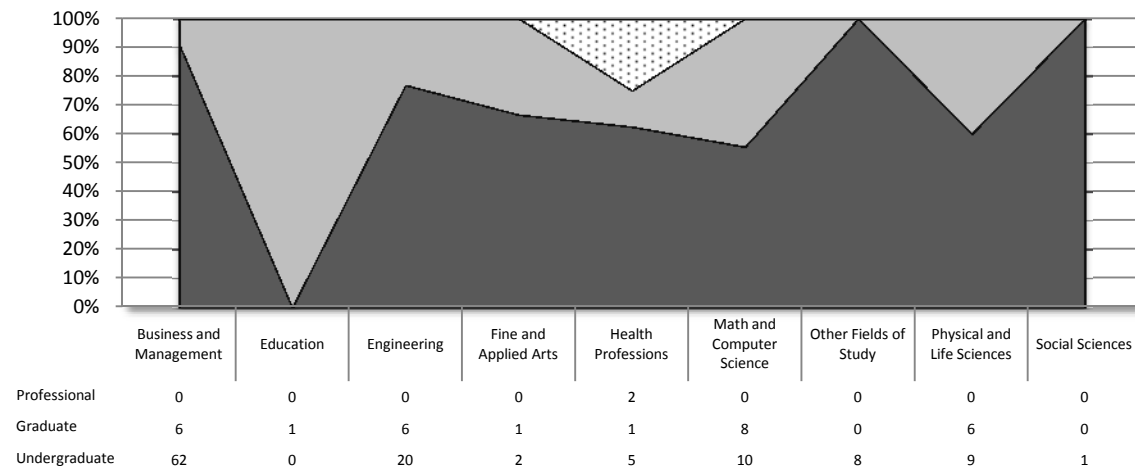
Selected Fields of Study: China (2/2)

459 Students



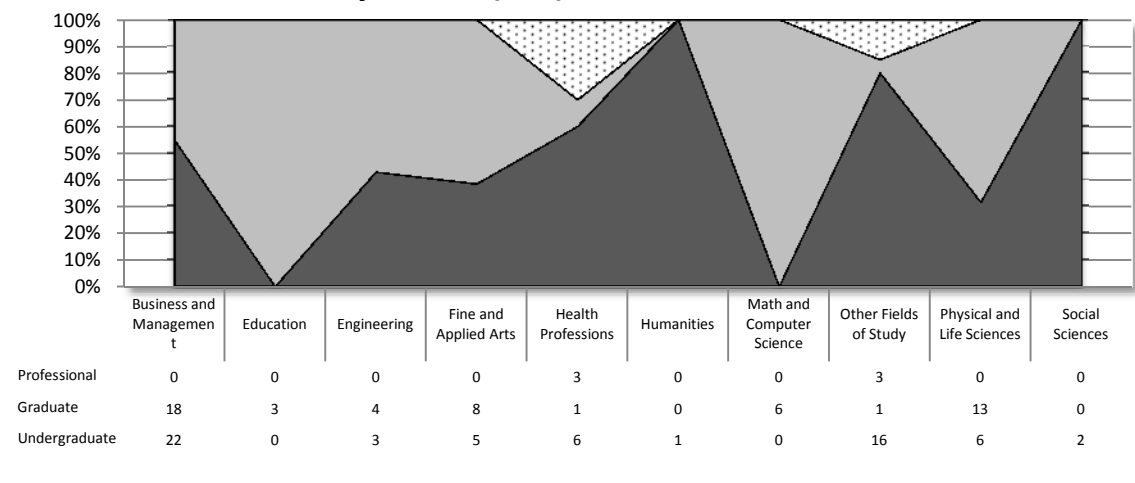
Selected Fields of Study: Vietnam (3/9)

148 Students



Selected Fields of Study: Korea (4/3)

121 Students



Undergraduate



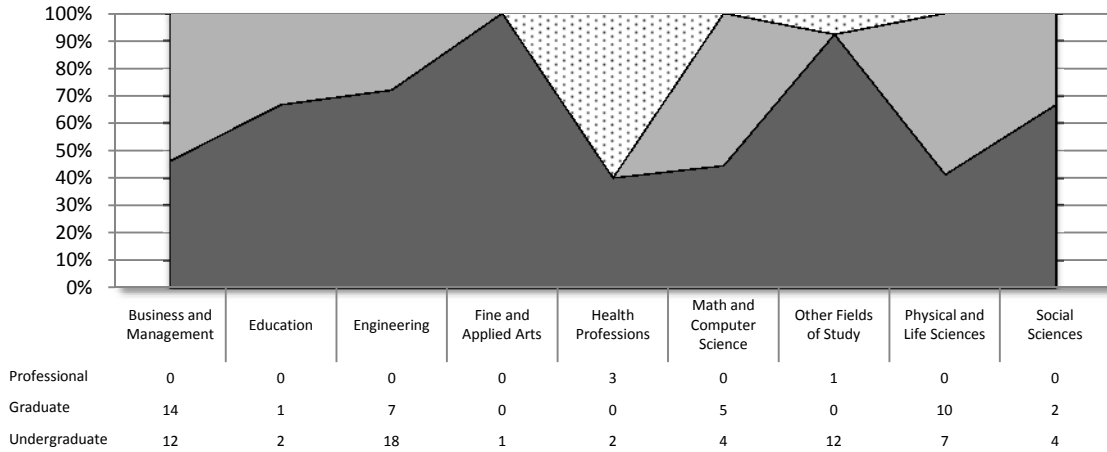
Graduate



Professional

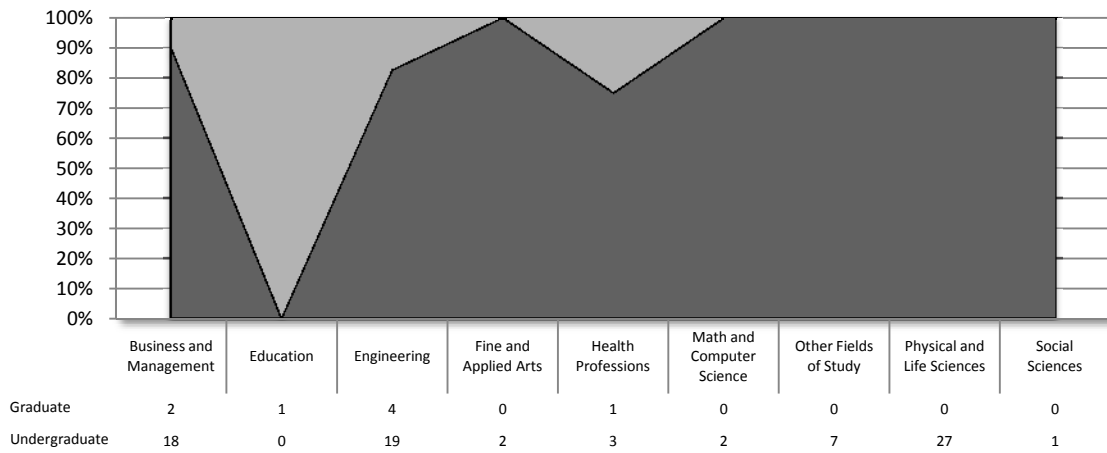
Selected Fields of Study: Nigeria (5/20)

105 Students



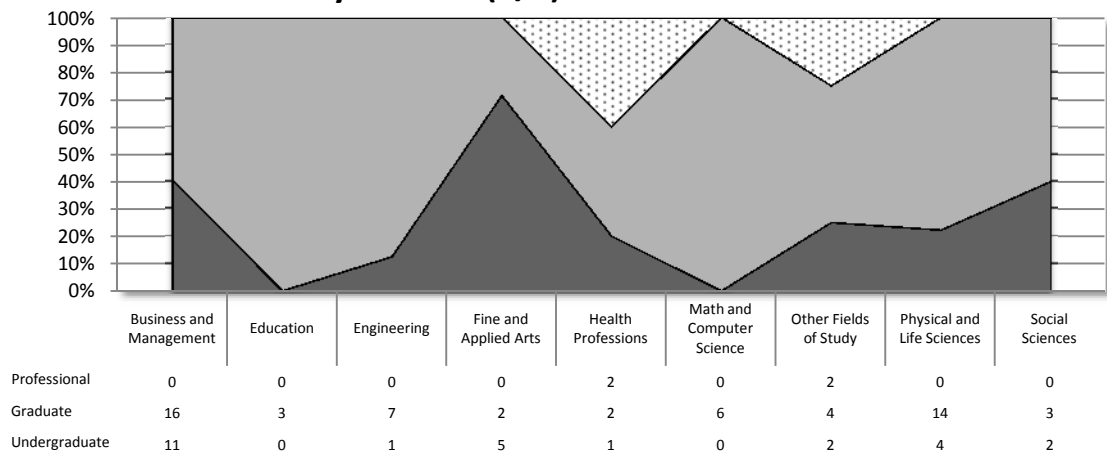
Selected Fields of Study: Saudi Arabia (6/10)

87 Students



Selected Fields of Study: Taiwan (6/6)

87 Students



Undergraduate



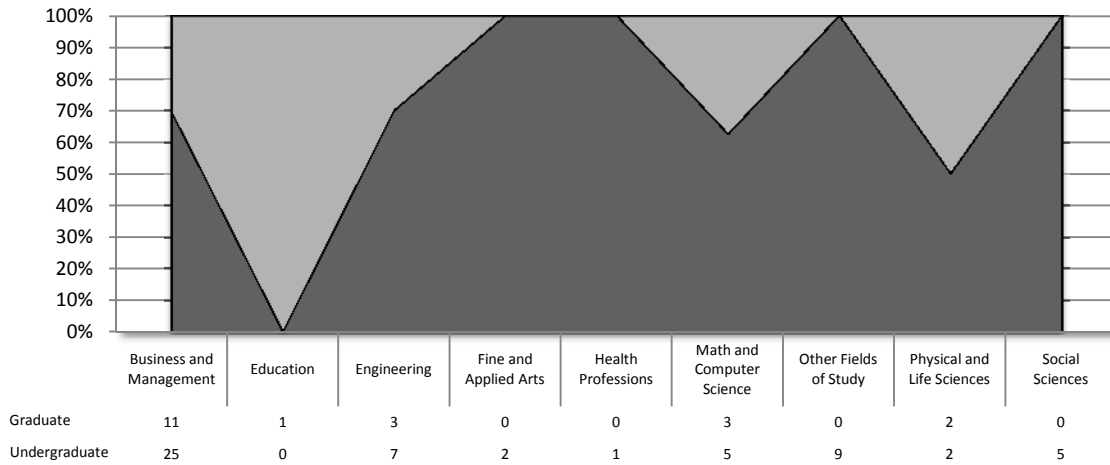
Graduate



Professional

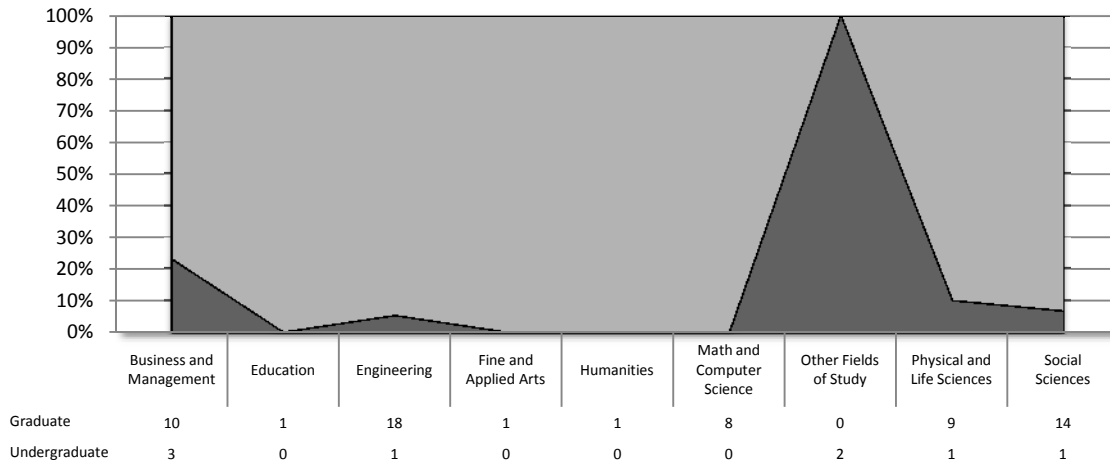
Selected Fields of Study: Pakistan (7/23)

76 Students



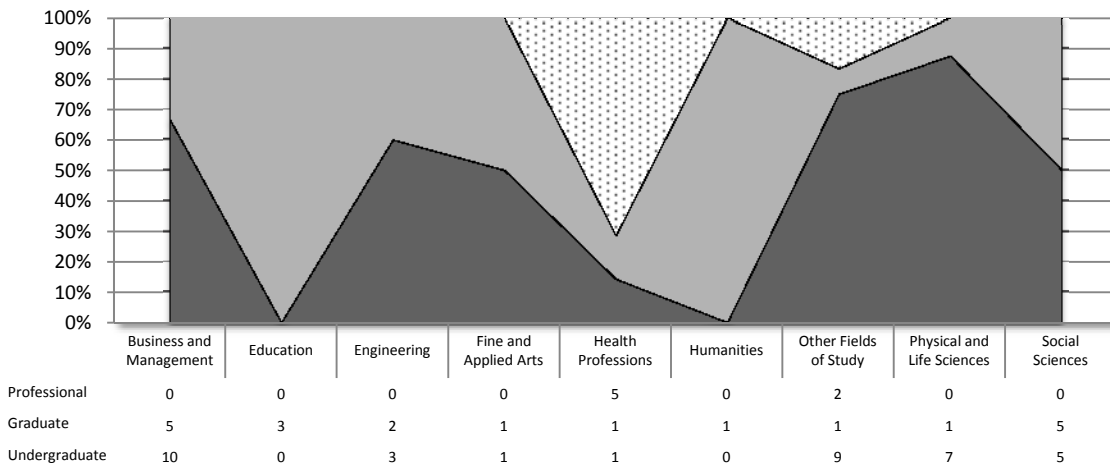
Selected Fields of Study: Turkey (8/8)

70 Students



Selected Fields of Study: Canada (9/4)

63 Students



Undergraduate



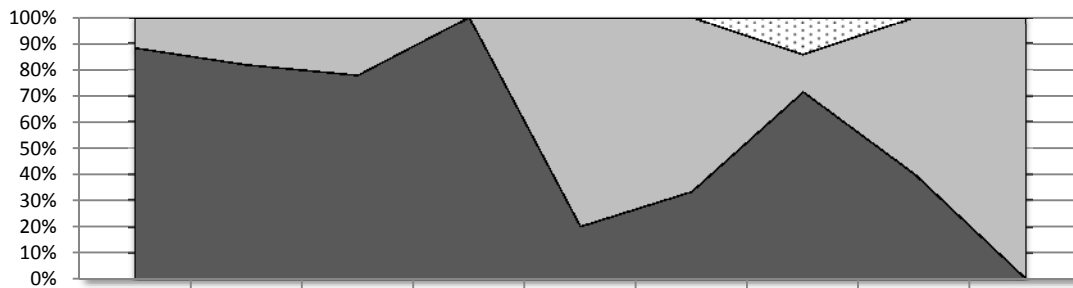
Graduate



Professional

Selected Fields of Study: Mexico (10/7)

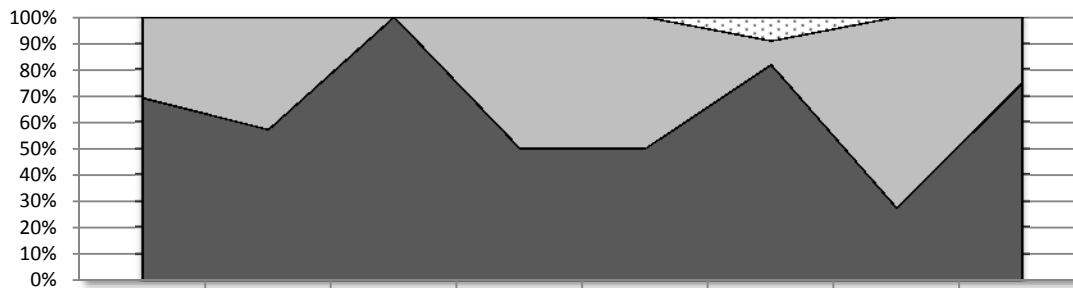
62 Students



	Business and Management	Engineering	Fine and Applied Arts	Health Professions	Humanities	Math and Computer Science	Other Fields of Study	Physical and Life Sciences	Social Sciences
Professional	0	0	0	0	0	0	1	0	0
Graduate	2	2	2	0	4	4	1	3	1
Undergraduate	15	9	7	1	1	2	5	2	0

Selected Fields of Study: Venezuela (11/25)

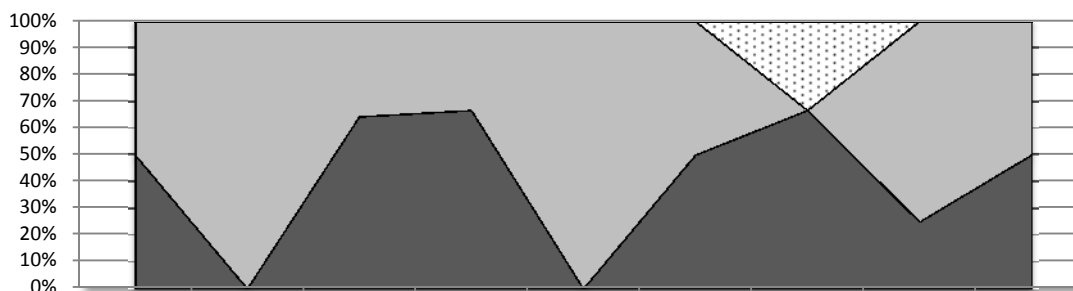
59 Students



	Business and Management	Engineering	Fine and Applied Arts	Humanities	Math and Computer Science	Other Fields of Study	Physical and Life Sciences	Social Sciences
Professional	0	0	0	0	0	1	0	0
Graduate	4	6	0	1	1	1	8	1
Undergraduate	9	8	2	1	1	9	3	3

Selected Fields of Study: Colombia (12/19)

49 Students



	Business and Management	Education	Engineering	Fine and Applied Arts	Humanities	Math and Computer Science	Other Fields of Study	Physical and Life Sciences	Social Sciences
Professional	0	0	0	0	0	0	2	0	0
Graduate	5	1	5	2	2	1	0	3	2
Undergraduate	5	0	9	4	0	1	4	1	2



Undergraduate



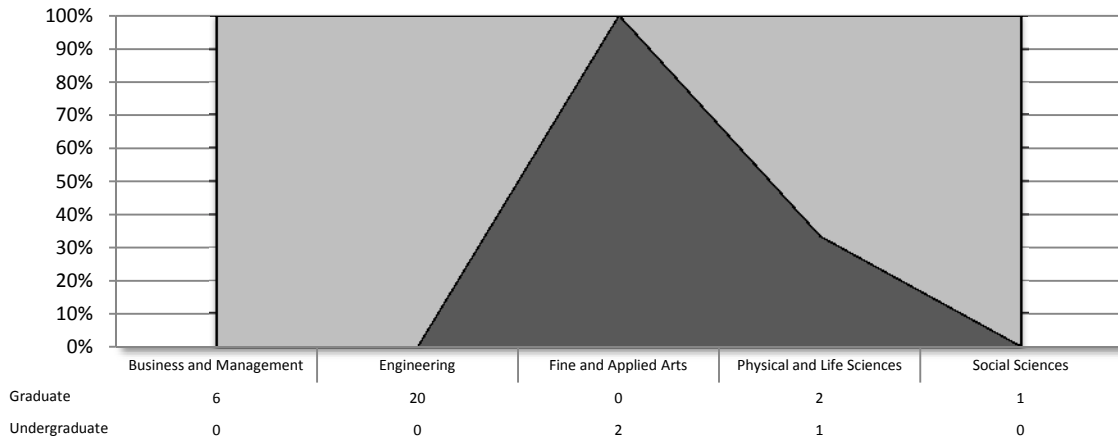
Graduate



Professional

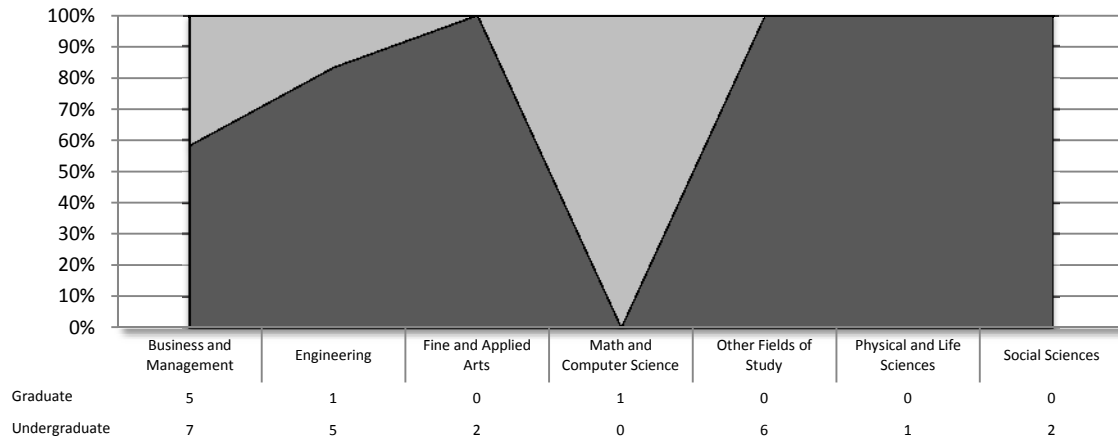
Selected Fields of Study: Iran (13/-)

32 Students



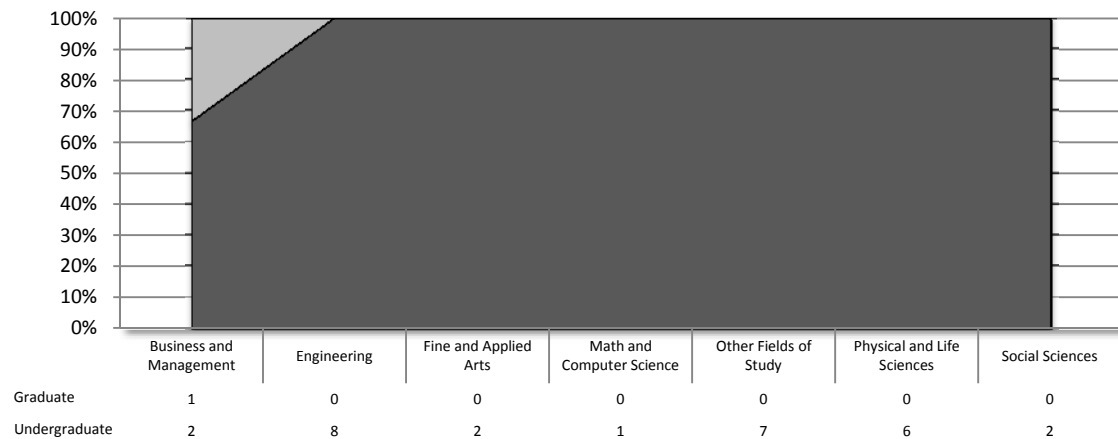
Selected Fields of Study: Indonesia (14/17)

30 Students



Selected Fields of Study: Angola (15/-)

29 Students



Undergraduate



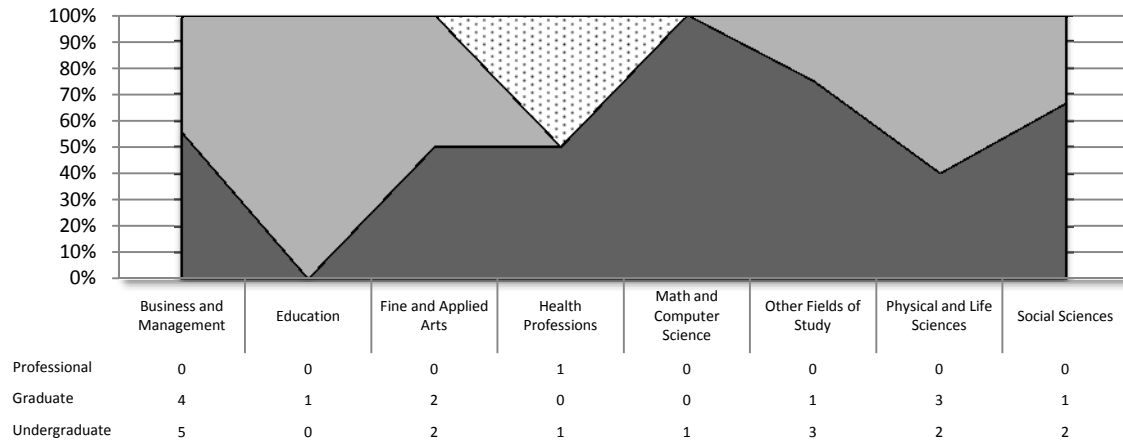
Graduate



Professional

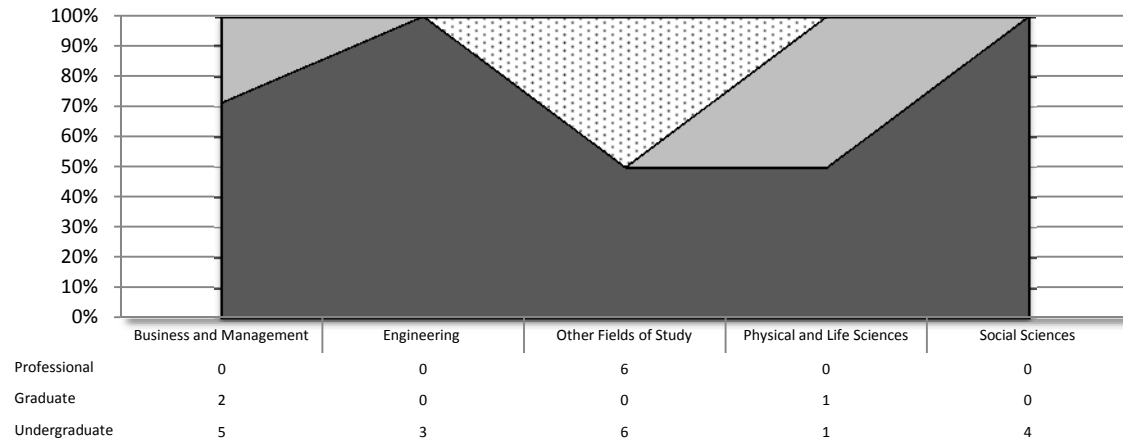
Selected Fields of Study: United Kingdom (16/15)

29 Students



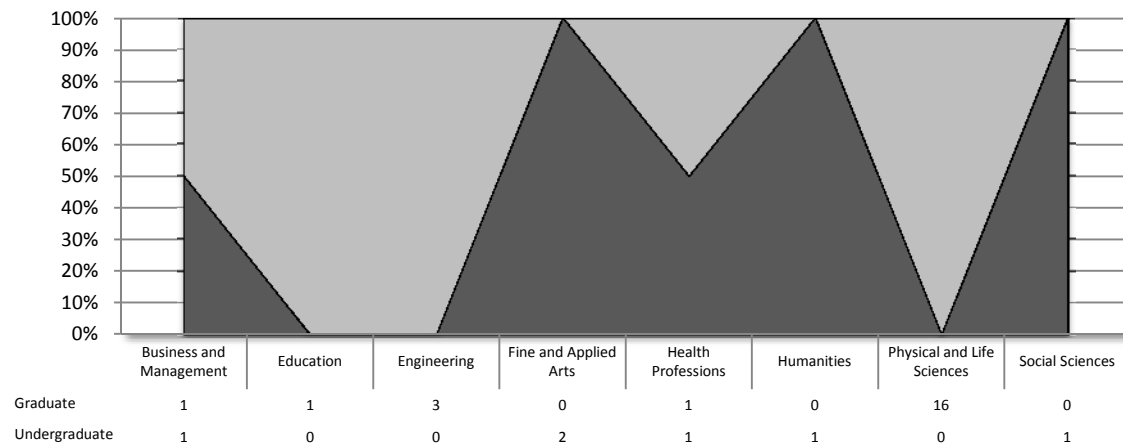
Selected Fields of Study: Brazil (17/13)

28 Students



Selected Fields of Study: Philippines (18/-)

28 Students



Undergraduate



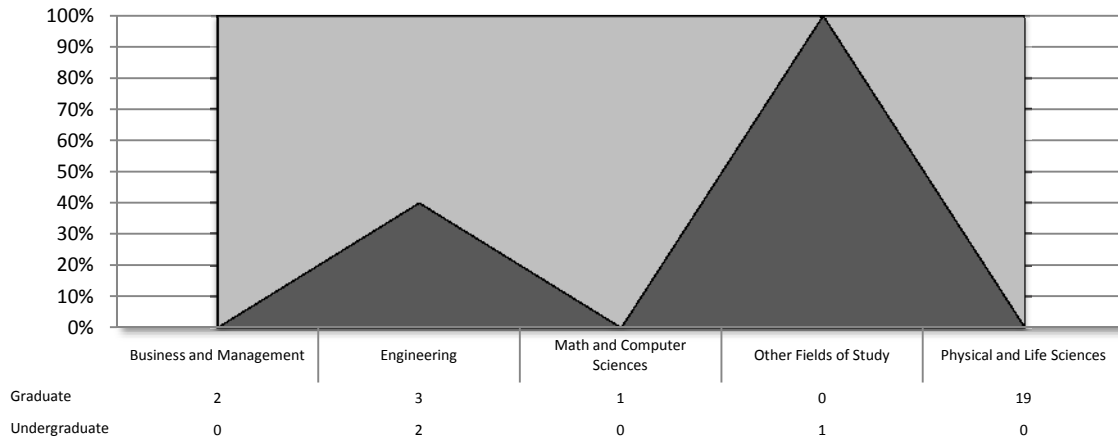
Graduate



Professional

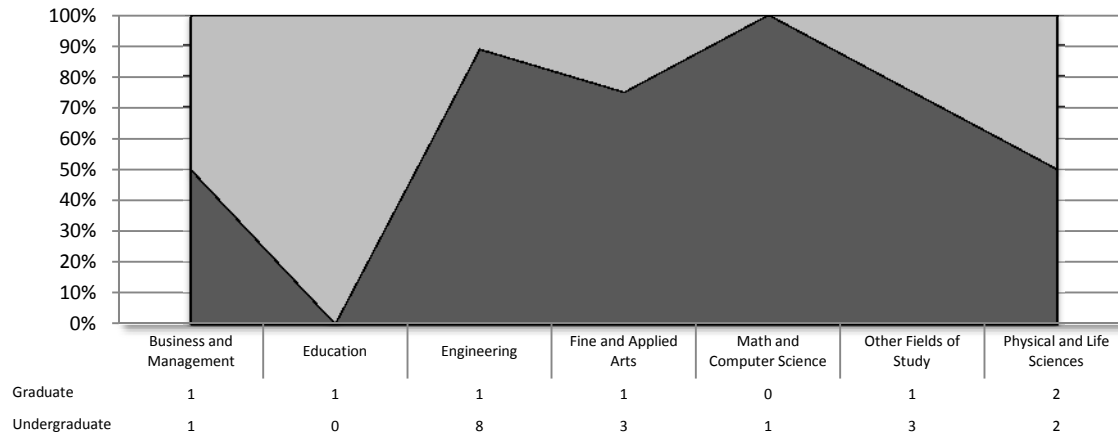
Selected Fields of Study: Sri Lanka (19/-)

28 Students



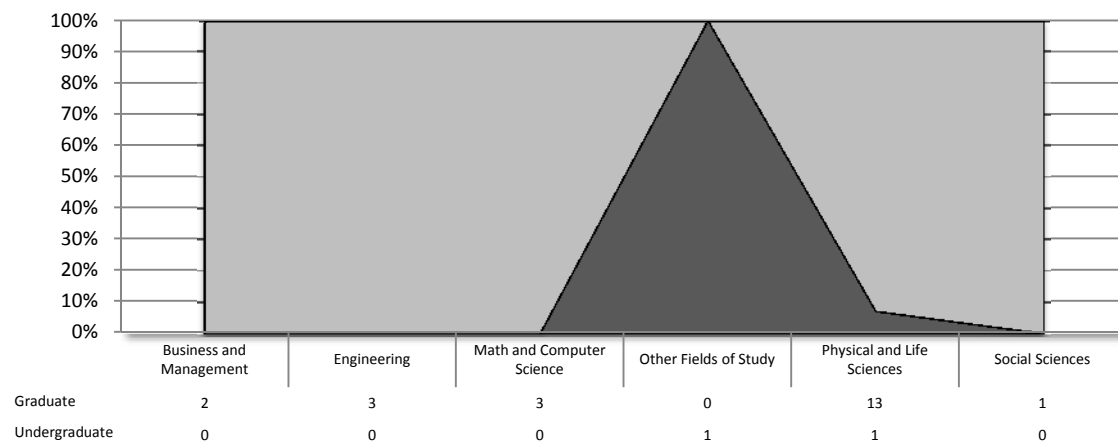
Selected Fields of Study: Malaysia (20/21)

25 Students



Selected Fields of Study: Thailand (21/14)

24 Students



Undergraduate



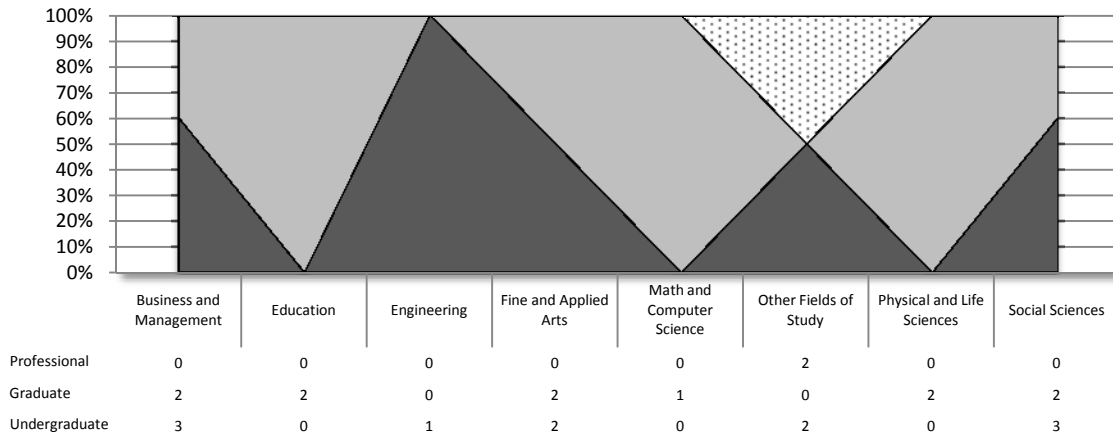
Graduate



Professional

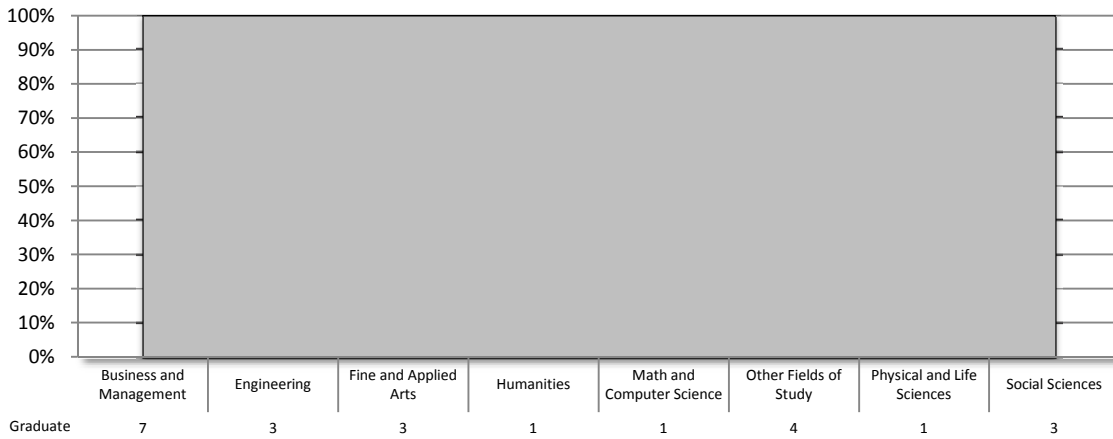
Selected Fields of Study: Japan (22/5)

24 Students



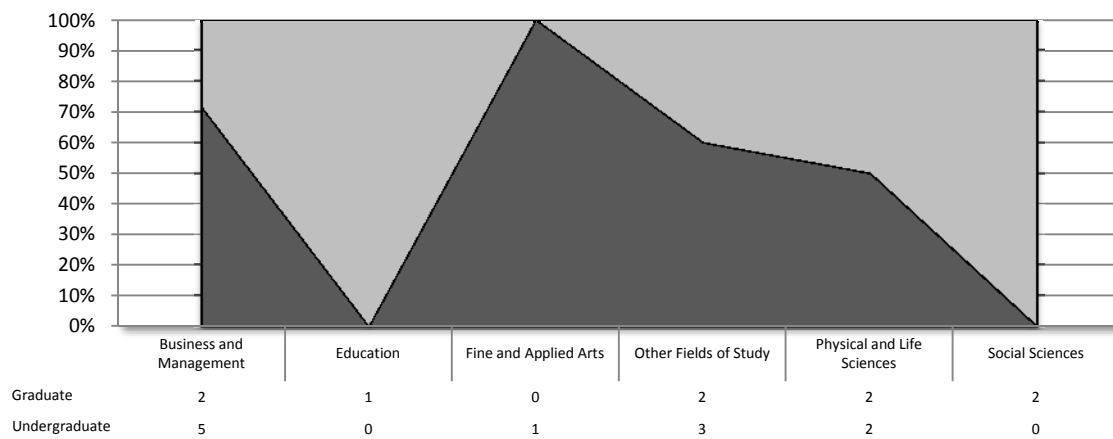
Selected Fields of Study: Hong Kong (23/16)

23 Students



Selected Fields of Study: Germany (24/12)

20 Students



Undergraduate



Graduate



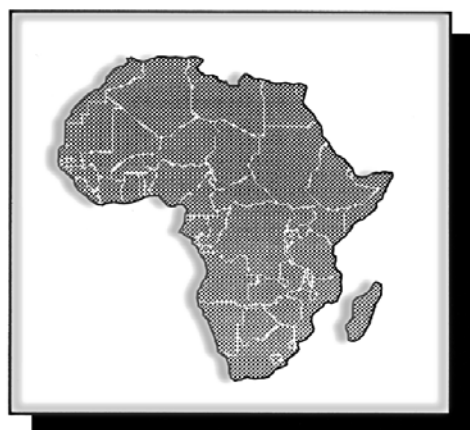
Professional

Enrollment by Geographical Region

Non-Immigrants

Africa

270



East Africa **38**

Ethiopia	5
Kenya	17
Tanzania	9
Uganda	1
Zambia	2
Zimbabwe	4

Central Africa **46**

Angola	29
Cameroon	9
Chad	1
Gabon	7

North Africa **46**

Algeria	3
Egypt	14
Libya	7
Morocco	8
Tunisia	14

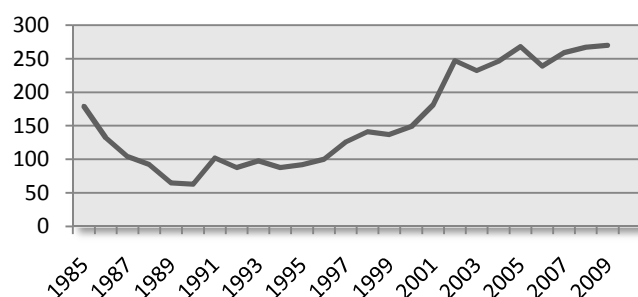
Southern Africa **8**

Botswana	1
Namibia	1
South Africa	5
Swaziland	1

West Africa **132**

Benin	1
Burkina Faso	3
Cote D'Ivoire	8
Ghana	7
Guinea	1
Mali	4
Mauritania	1
Nigeria	105
Senegal	1
Togo	1

25 Year Regional Trends: Africa*



*Data for regional trend was compiled from previously published ISSSO Enrollment Reports (1985-2008).

Asia

1955



***East Asia* 716**

China	459
Hong Kong	23
Japan	24
Korea, Republic of	121
Mongolia	2
Taiwan	87

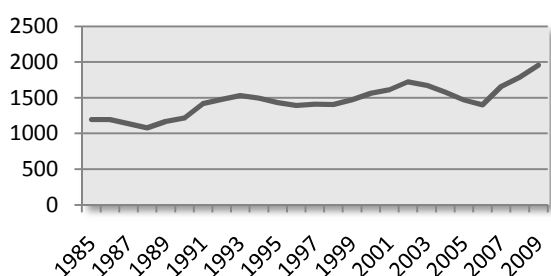
***South and Central Asia* 969**

Afghanistan	1
Bangladesh	8
India	825
Kazakstan	14
Kyrgyzstan	1
Nepal	15
Pakistan	76
Sri Lanka	28
Turkmenistan	1

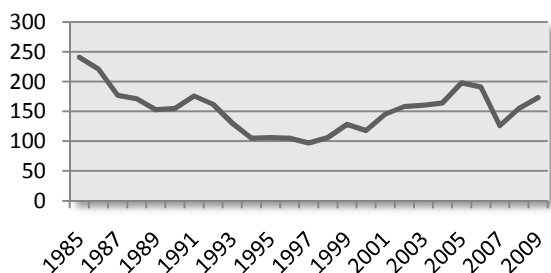
***Southeast Asia* 270**

Cambodia	2
Indonesia	30
Malaysia	25
Myanmar	2
Philippines	28
Singapore	11
Thailand	24
Vietnam	148

25 Year Regional Trends: Asia*



25 Year Regional Trends: Middle East*



Middle East

173



Iran	32
Iraq	4
Israel	8
Jordan	12
Kuwait	3
Lebanon	17
Palestinian Territories	1
Qatar	3
Saudi Arabia	87
Syria	4
United Arab Emirates	2

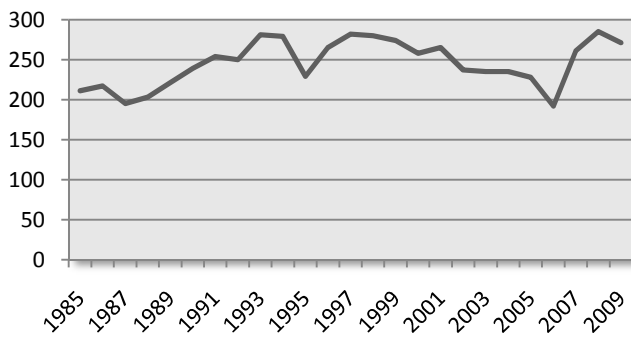
*Data for regional trends was compiled from previously published ISSSO Enrollment Reports (1985-2008).

Europe



Albania	4
Azerbaijan	11
Belguim	2
Bulgaria	7
Croatia	5
Cyprus	2
Denmark	4
Finland	4
Macedonia	1
France	15
Georgia	2
Germany	20
Greece	8
Hungary	3
Ireland	3
Italy	7
Latvia	4
Lithuania	2
Moldova	1
Netherlands	8
Norway	2
Poland	5
Portugal	1
Serbia	4
Romania	7
Russia	16
Slovakia	1
Slovenia	1
Spain	7
Sweden	2
Switzerland	1
Turkey	70
Ukraine	12
United Kingdom	29

25 Year Regional Trends: Europe*



*Data for regional trend was compiled from previously published ISSSO Enrollment Reports (1985-2008).

Latin America



Caribbean **26**

Anguilla	1
Bahamas	4
Cayman Islands	1
Dominica	1
Dominican Republic	4
Jamaica	2
St Vincent and the Grenadines	1
Trinidad and Tobago	12

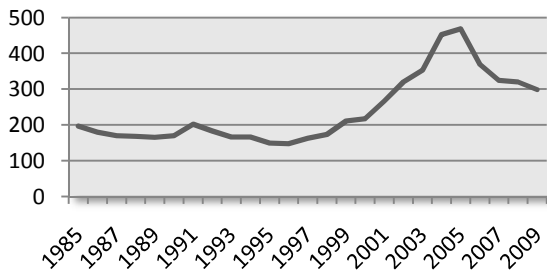
Mexico and Central America **88**

Belize	4
Costa Rica	2
El Salvador	7
Guatemala	4
Honduras	6
Mexico	62
Nicaragua	1
Panama	2

South America **184**

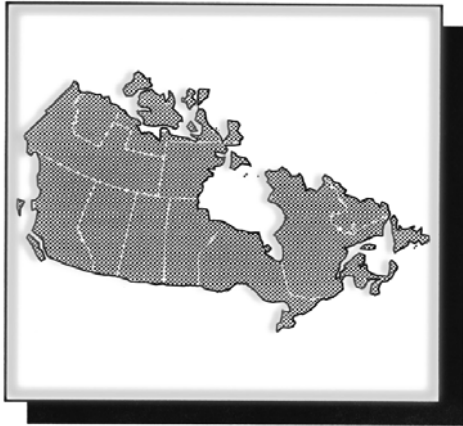
Argentina	13
Bolivia	3
Brazil	28
Chile	1
Colombia	49
Ecuador	11
Paraguay	1
Peru	19
Venezuela	59

25 Year Regional Trends: Latin America*



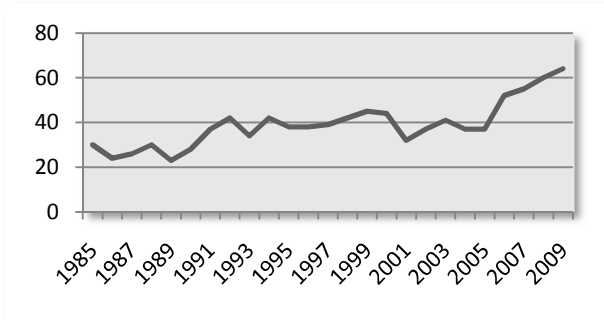
*Data for regional trend was compiled from previously published ISSSO Enrollment Reports (1985-2008).

North America

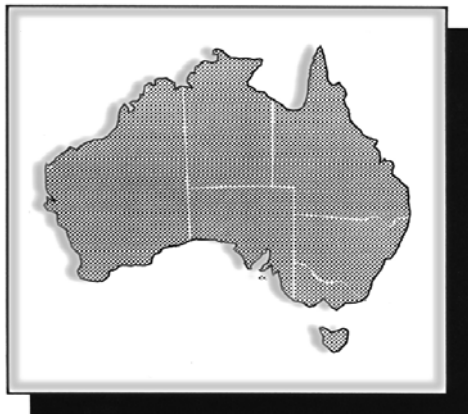


Bermuda	1
Canada	63

25 Year Regional Trends: North America*

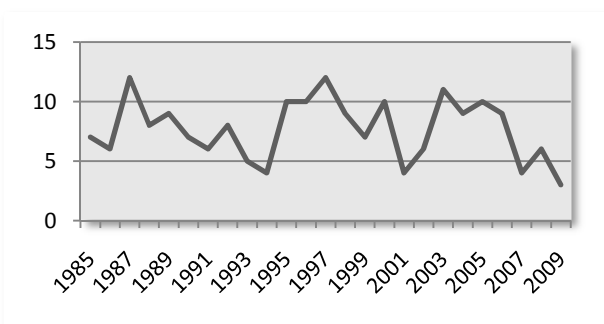


Oceania



Australia	3
------------------	----------

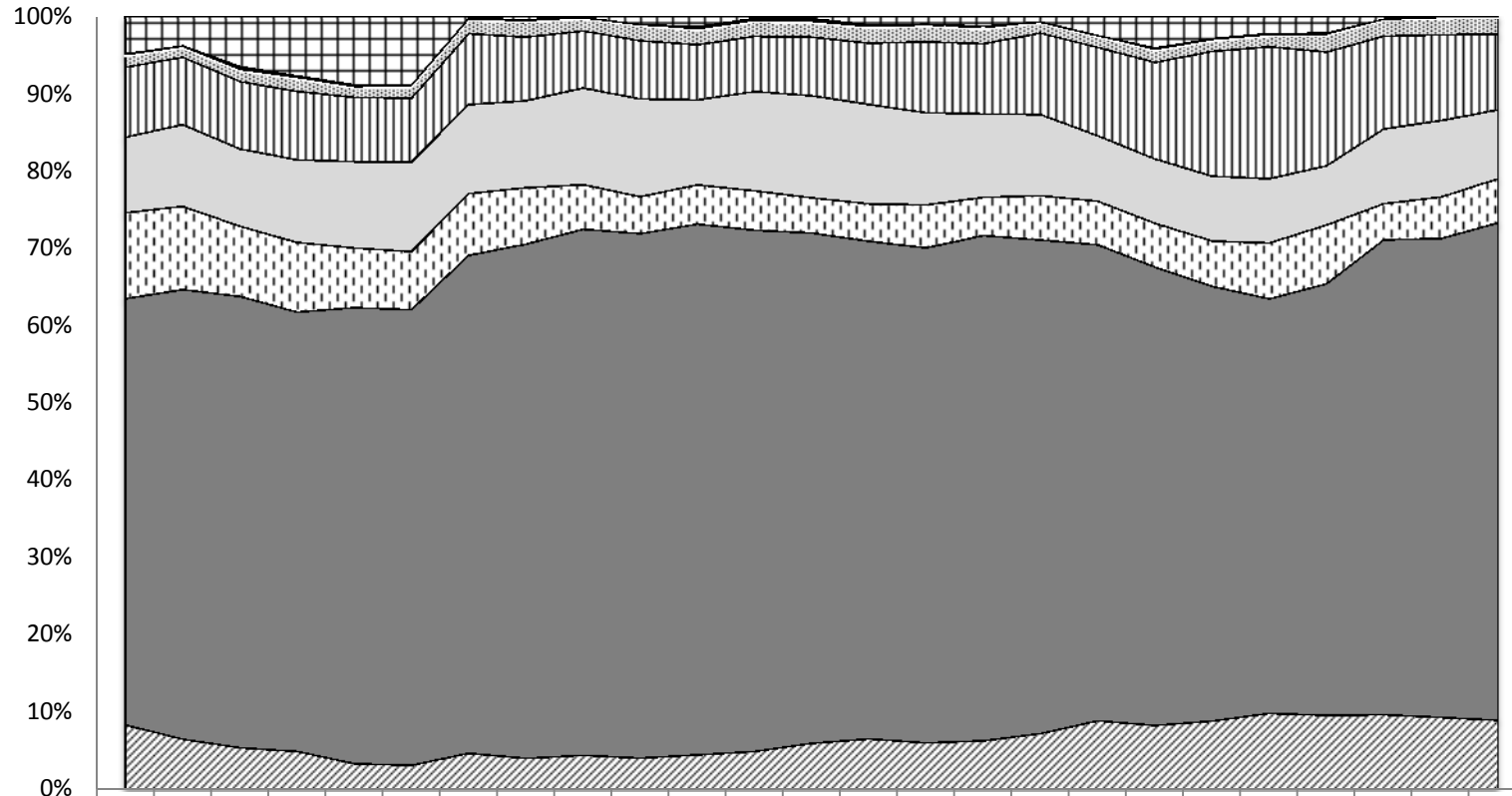
25 Year Regional Trends: Oceania*



Grand Total

*Data for regional trends was compiled from previously published ISSSO Enrollment Reports (1985-2008).

25 Year Non-Immigrant Enrollment Trends



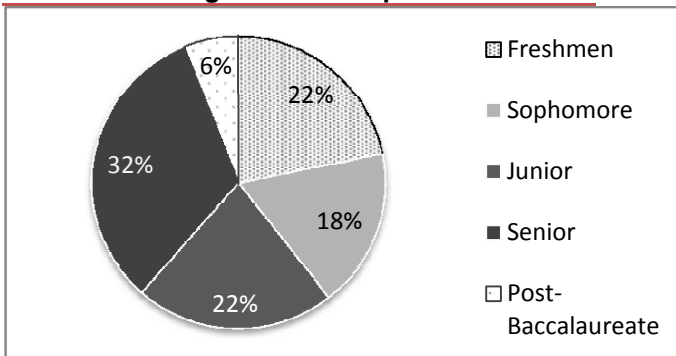
	1985	1986	1987	1988	1989	1990	1991	1992	1993	1994	1995	1996	1997	1998	1999	2000	2001	2002	2003	2004	2005	2006	2007	2008	2009
Other Foreign Unknown	104	77	125	145	174	182	5	8	2	22	27	4	5	23	22	29	17	68	114	79	59	53	8	1	0
Oceania	7	6	12	8	9	7	6	8	5	4	10	10	12	9	7	10	4	6	11	9	10	9	4	6	3
North America	30	24	26	30	23	28	37	42	34	42	38	38	39	42	45	44	32	37	41	37	37	52	55	60	64
Latin America	196	179	170	168	165	170	202	183	166	166	149	147	162	173	211	217	266	320	353	452	468	369	324	320	298
Europe	211	217	195	203	221	239	254	250	281	279	229	265	282	280	274	258	265	237	235	235	228	192	261	285	271
Middle East	241	221	177	171	153	155	176	162	130	105	106	105	97	106	128	118	145	158	160	164	198	191	126	155	173
Asia	1193	1193	1138	1079	1168	1215	1420	1477	1530	1496	1432	1390	1410	1403	1472	1562	1612	1724	1674	1574	1470	1400	1657	1786	1955
Africa	179	132	104	92	65	63	102	88	98	88	92	100	126	141	137	149	181	247	232	246	268	239	259	267	270

Africa
 Asia
 Middle East
 Europe
 Latin America
 North America
 Oceania
 Other Foreign Unknown

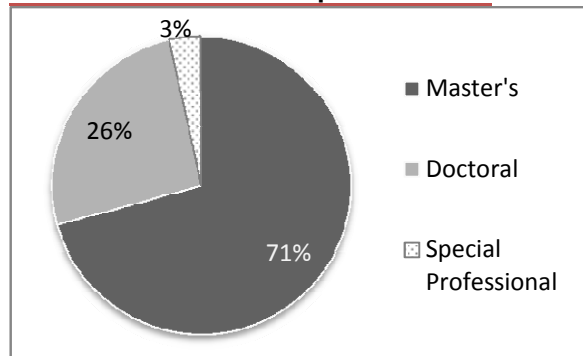
Non-Immigrant Enrollment Distribution by Level of Study

Classification	2009	2008	Growth
Freshmen	258	299	-13.7%
Sophomore	208	195	6.7%
Junior	261	259	0.8%
Senior	385	352	9.4%
Post-Baccalaureate	71	76	-6.6%
Undergraduate Total:	1183	1181	0.2%
Master's	1310	1167	12.3%
Doctoral	477	453	5.3%
Special Professional	64	79	-19.0%
Graduate Total:	1851	1699	8.9%
Grand Total:	3,034	2,880	5.3%

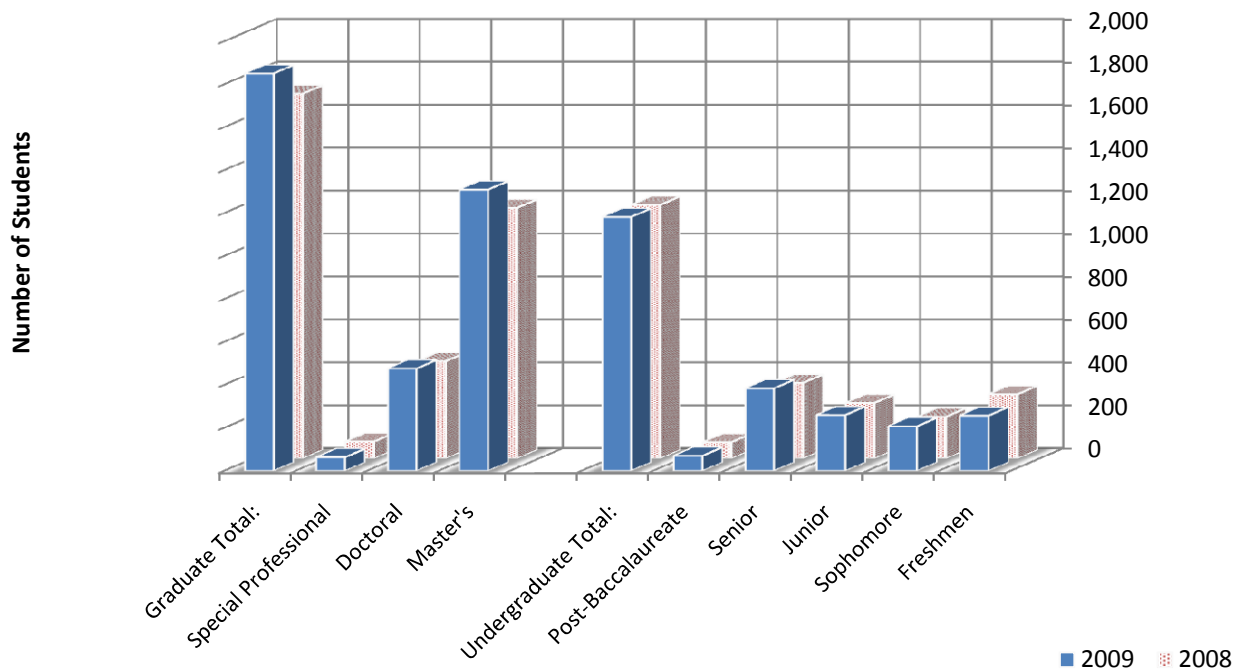
Fall 2009 Undergraduate Composition



Fall 2009 Graduate Composition



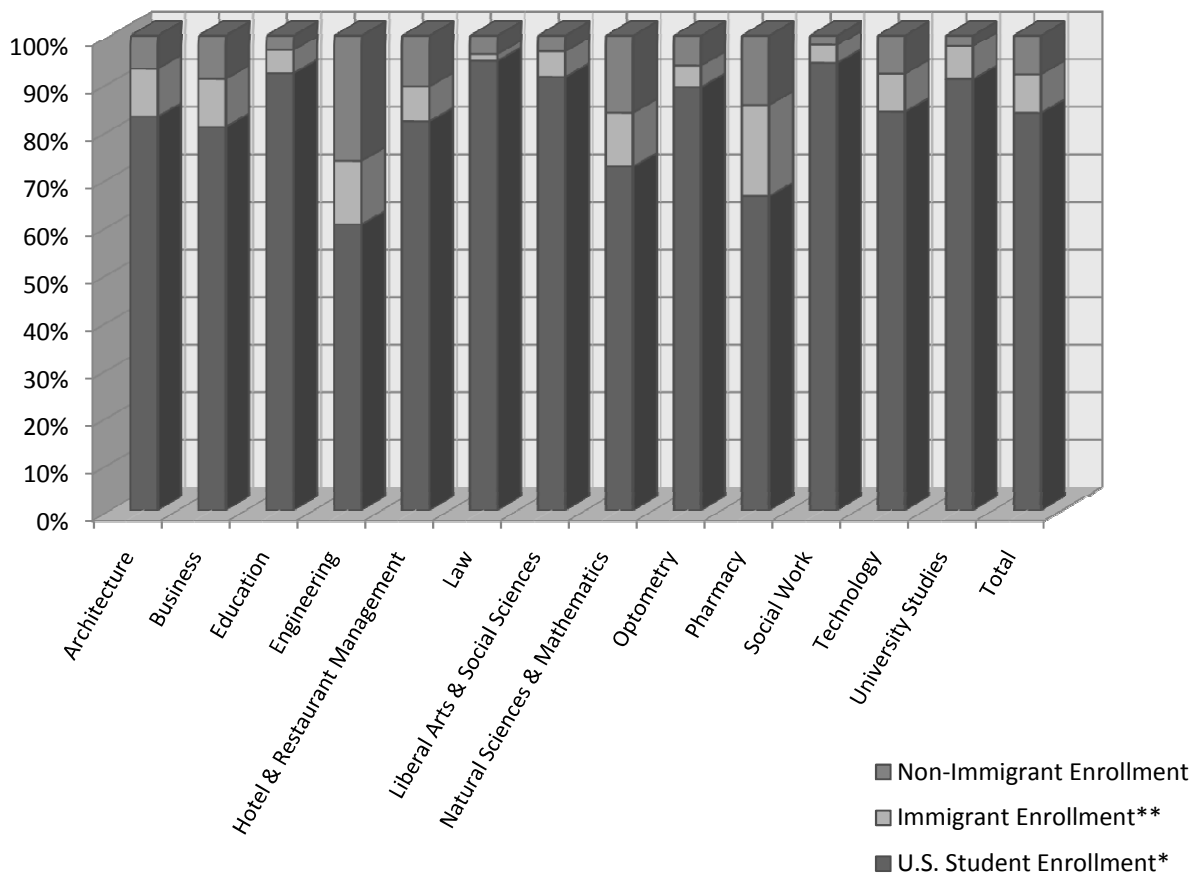
Fall 2009 Distribution by Level of Study



International Student to U.S. Student Enrollment by College

College	U.S. Student Enrollment*	Immigrant Enrollment**	Non-Immigrant Enrollment	% Non-Immigrants to U.S. + Immigrant Students
Architecture	626	76	53	7.5%
Business	4,750	592	540	10.1%
Education	3,335	179	110	3.1%
Engineering	1,677	371	734	35.8%
Hotel & Restaurant Management	838	75	110	12.0%
Law	917	14	38	4.1%
Liberal Arts & Social Sciences	7,732	457	284	3.5%
Natural Sciences & Mathematics	3,305	515	742	19.4%
Optometry	393	20	28	6.8%
Pharmacy	470	136	104	17.2%
Social Work	341	14	7	2.0%
Technology	1,754	167	168	8.7%
University Studies	4,837	375	116	2.2%
Total	30,975	2,991	3,034	8.9%

Non-Immigrant/Immigrant/U.S. Student Enrollment Ratio



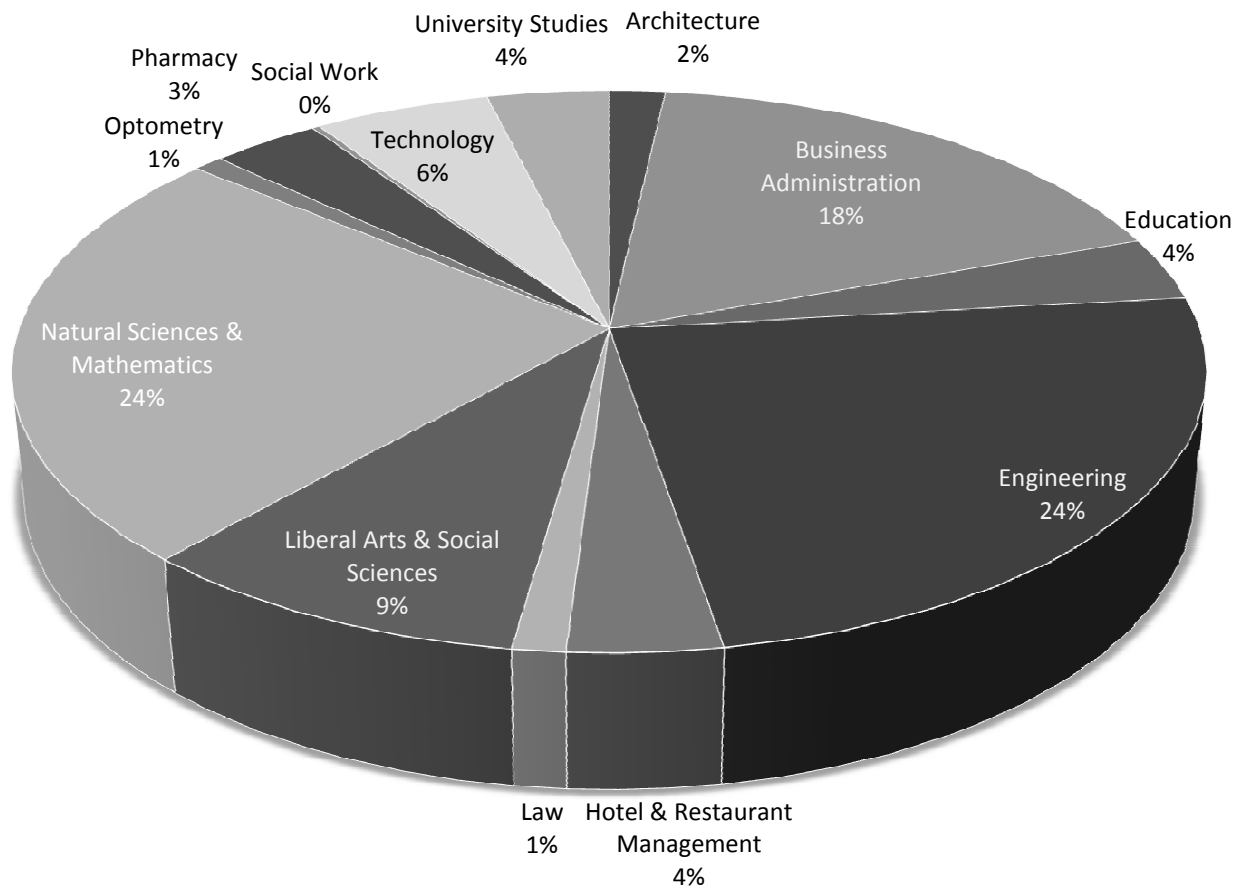
* U.S. Student Enrollment includes students from Puerto Rico and American Samoa

** Immigrant Enrollment count includes legal permanent residents, refugees, and others.

Fall 2009 Non-Immigrant Enrollment Distribution by College

College	Non-Immigrant Enrollment	% Non-Immigrant Per College
Architecture	53	1.7%
Business Administration	540	17.8%
Education	110	3.6%
Engineering	734	24.2%
Hotel & Restaurant Management	110	3.6%
Law	38	1.3%
Liberal Arts & Social Sciences	284	9.4%
Natural Sciences & Mathematics	742	24.5%
Optometry	28	0.9%
Pharmacy	104	3.4%
Social Work	7	0.2%
Technology	168	5.5%
University Studies	116	3.8%
Total Non-Immigrant Enrollment	3034	100.0%

Percentage of Non-Immigrant Enrollment by College



Non-Immigrant Student Enrollment by College and Origin

Architecture									38	15	53
Country	UG	G	Total	Country	UG	G	Total	Country	UG	G	Total
Albania	1		1	France	4		4	Morocco		1	1
Algeria		1	1	Germany	1		1	Myanmar/Burma	1		1
Angola	2		2	Hong Kong	1		1	Nigeria	1		1
Argentina	1		1	India	1	2	3	Pakistan	1		1
Botswana		1	1	Indonesia	1		1	Philippines	1		1
China, People's Rep. of	3	6	9	Iran	1		1	Taiwan	4		4
Colombia	2		2	Ireland	1		1	Trinidad & Tobago	2	1	3
Cote d'Ivoire/Ivory Coast	1		1	Italy	1		1	Venezuela	1		1
Egypt	1		1	Japan		1	1	Vietnam	1	1	2
Finland	1		1	Mexico	3	1	4				
Business Administration									307	233	540
Country	UG	G	Total	Country	UG	G	Total	Country	UG	G	Total
Albania	1		1	Ghana	1	1	2	Panama	1		1
Angola	2	1	3	Greece	1		1	Peru	3		3
Argentina	1	2	3	Honduras		1	1	Philippines	1	1	2
Australia	2		2	Hong Kong	3	3	6	Poland	1		1
Azerbaijan	3	1	4	India	25	60	85	Qatar	2		2
Bangladesh	2		2	Indonesia	5	2	7	Romania		1	1
Brazil	3	2	5	Iran	5	6	6	Russia	2	1	3
Bulgaria	1		1	Israel	1	1	2	Saudi Arabia	14		14
Burkina Faso	1		1	Italy	2		2	Senegal	1		1
Cambodia	1		1	Japan	2	2	4	Singapore	2	1	3
Cameroon		2	2	Jordan		1	1	Slovenia	1		1
Canada	7	4	11	Kazakhstan	5	1	6	South Korea	8	8	16
China, People's Rep. of	38	52	90	Kenya		3	3	Sri Lanka		2	2
Colombia	5	4	9	Kuwait	1		1	St. Vincent and the Grenadines	1		1
Cote d'Ivoire/Ivory Coast	1		1	Lebanon	3	2	5	Taiwan	11	11	22
Croatia		1	1	Lithuania	1		1	Tanzania	4		4
Denmark	1	1	2	Malaysia	1	1	2	Thailand		1	1
Dominica	1		1	Mali	2		2	Trinidad & Tobago		2	2
Dominican Republic	2		2	Mexico	8	1	9	Turkey	2	8	10
Ecuador	3		3	Morocco	1		1	Ukraine		1	1
Egypt	1	1	2	Myanmar/Burma		1	1	United Arab Emirates	1		1
El Salvador	2		2	Nepal	2		2	United Kingdom	4	3	7
Ethiopia	1		1	Netherlands	1	2	3	Venezuela	6	2	8
France	4		4	Nigeria	12	14	26	Vietnam	53	3	56
Gabon	2	1	3	Norway	1	1	2	Zambia	1		1
Germany	1	1	2	Pakistan	24	10	34	Zimbabwe		2	2
Education									55	55	110
Country	UG	G	Total	Country	UG	G	Total	Country	UG	G	Total
Argentina		1	1	Hong Kong	2		2	Pakistan	1	1	2
Belize	1		1	India	2	8	10	Peru	1		1
Bermuda	1		1	Indonesia	2		2	Philippines	1	1	2
Brazil	2		2	Iran		1	1	Poland	1		1
Canada	6	5	11	Israel	1		1	Saudi Arabia	2	1	3
China, People's Rep. of	8	10	18	Jamaica		1	1	Singapore		1	1
Colombia	1	1	2	Japan	2	2	4	South Korea	4	3	7
Costa Rica	1		1	Jordan	1		1	Taiwan	2	3	5
Croatia		1	1	Latvia	1		1	Trinidad & Tobago		1	1
France	1	1	2	Lebanon	1		1	Turkey		2	2
Germany		3	3	Malaysia	1	1	2	United Kingdom	2	2	4
Greece		2	2	Mexico	2		2	Vietnam		1	1
Honduras		1	1	Nigeria	5	1	6				

Non-Immigrant Student Enrollment by College and Origin

Engineering											
Country	UG	G	Total	Country	UG	G	Total	Country	UG	G	Total
Algeria		1	1	Guatemala	1		1	Pakistan	7	2	9
Angola	7		7	Honduras		1	1	Panama	1		1
Argentina	1		1	Hong Kong	2	1	3	Peru	2	1	3
Azerbaijan		2	2	India	18	311	329	Philippines		3	3
Bahamas	1		1	Indonesia	4	1	5	Russia		2	2
Bangladesh		1	1	Iran		20	20	Saudi Arabia	18	4	22
Brazil	3		3	Iraq	1		1	Slovakia	1		1
Bulgaria		1	1	Israel	2		2	South Korea	3	4	7
Burkina Faso	1		1	Jamaica	1		1	Sri Lanka	2	3	5
Cameroon	1		1	Japan	1		1	Syria	2		2
Canada	1	2	3	Jordan	2	3	5	Taiwan	1	7	8
China, People's Rep. of	18	97	115	Kazakhstan	2		2	Tanzania	2		2
Colombia	8	4	12	Kenya	3		3	Thailand		4	4
Cote d'Ivoire/Ivory Coast	1	1	2	Lebanon	4	3	7	Trinidad & Tobago	1		1
Ecuador	4		4	Libya	1	4	5	Tunisia	1	8	9
Egypt	2	3	5	Malaysia	8	1	9	Turkey	1	16	17
El Salvador	1		1	Mexico	6	2	8	Turkmenistan		1	1
Ethiopia	3		3	Mongolia	1		1	United Kingdom		1	1
France	1		1	Morocco	1	1	2	Venezuela	8	5	13
Gabon		1	1	Nepal	3	3	6	Vietnam	18	6	24
Ghana	1		1	Nigeria	14	6	20				
Hotel & Restaurant Management											
Country	UG	G	Total	Country	UG	G	Total	Country	UG	G	Total
Anguilla	1		1	Guatemala	1		1	Russia	1		1
Bahamas	2		2	Hong Kong		1	1	Saudi Arabia	2		2
Belize		1	1	Hungary	1		1	Singapore		1	1
Bolivia	1		1	India		3	3	South Korea	14	10	24
Brazil	2		2	Indonesia	2	3	5	Sweden	1		1
Canada	3		3	Japan	1		1	Taiwan		3	3
China, People's Rep. of	16	9	25	Kazakhstan	3		3	Turkey	1	1	2
Denmark		1	1	Mexico	6		6	Ukraine	1		1
El Salvador	1		1	Nepal	1		1	Venezuela	2		2
Finland	1		1	Pakistan	1		1	Vietnam	7	1	8
Germany	2		2	Portugal	1		1	Zimbabwe	1		1
Law											
Country	UG	G	Total	Country	UG	G	Total	Country	UG	G	Total
Belgium	0	1	1	Ghana	0	1	1	South Korea	0	3	3
Bolivia	0	1	1	India	0	3	3	Spain	0	1	1
Brazil	0	6	6	Japan	0	2	2	Taiwan	0	2	2
Cameroon	0	1	1	Mexico	0	1	1	Ukraine	0	1	1
Canada	0	2	2	Namibia	0	1	1	Venezuela	0	1	1
China, People's Rep. of	0	7	7	Nigeria	0	1	1				
Colombia	0	2	2	Russia	0	1	1				
Liberal Arts & Social Sciences											
Country	UG	G	Total	Country	UG	G	Total	Country	UG	G	Total
Afghanistan	1		1	Hong Kong	4	1	5	Peru	2	3	5
Albania		1	1	India	7	13	20	Philippines	2		2
Angola	2		2	Indonesia	3		3	Poland		1	1
Argentina		6	6	Iran	1		1	Romania	2	1	3
Australia	1		1	Ireland		1	1	Russia	3		3
Bahamas	1		1	Italy	1	1	2	Saudi Arabia	5		5
Bangladesh	1		1	Japan	4	3	7	Serbia		1	1
Belgium	1		1	Kazakhstan	1		1	Singapore	1	2	3
Belize	1		1	Kenya	2		2	South Africa	2	1	3
Brazil	4		4	Kuwait	2		2	South Korea	13	9	22
Bulgaria		3	3	Lebanon	1		1	Spain		3	3
Canada	4	6	10	Lithuania		1	1	Switzerland	1		1
China, People's Rep. of	4	21	25	Macedonia		1	1	Taiwan	1	9	10
Colombia	4	6	10	Malaysia	4	3	7	Thailand		1	1
Cote d'Ivoire/Ivory Coast	2		2	Mali	2		2	Trinidad & Tobago	1		1
Denmark		1	1	Mexico	8	7	15	Tunisia		1	1
Dominican Republic	1		1	Moldova		1	1	Turkey	1	15	16
Ecuador		1	1	Mongolia	1		1	Ukraine		6	6
Finland	2		2	Morocco	1		1	United Kingdom	5	2	7
Georgia		2	2	Netherlands	1	2	3	Venezuela	9	3	12
Germany	3	1	4	Nicaragua	1		1	Vietnam	5		5
Guatemala	1		1	Nigeria	6		6				
Honduras	2		2	Pakistan	6		6				

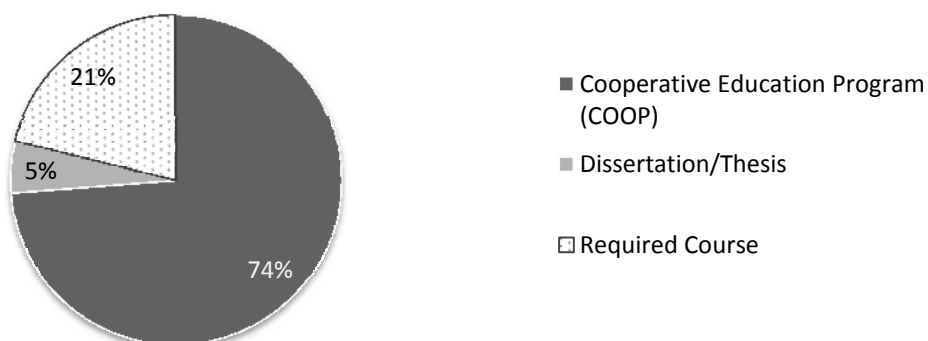
Non-Immigrant Student Enrollment by College and Origin

Natural Science & Mathematics												178	564	742
Country	UG	G	Total	Country	UG	G	Total	Country	UG	G	Total			
Albania		1	1	Germany	2	2	4	Romania		2	2			
Algeria		1	1	Greece	1	3	4	Russia		5	5			
Angola	7		7	Guatemala	1		1	Saudi Arabia	30		30			
Argentina		1	1	Hong Kong	1	1	2	Serbia		3	3			
Azerbaijan	1	2	3	India	17	206	223	Singapore	2		2			
Bangladesh	1		1	Indonesia	1	1	2	South Africa		1	1			
Benin	1		1	Iran	1	2	3	South Korea	7	19	26			
Bolivia	1		1	Iraq	1		1	Spain		2	2			
Brazil	1	1	2	Israel		2	2	Sri Lanka	1	20	21			
Cameroon	3		3	Italy		2	2	Swaziland		1	1			
Canada	7	1	8	Japan		3	3	Syria		1	1			
Chad	1		1	Jordan		3	3	Taiwan	4	20	24			
Chile	1		1	Kenya	3		3	Tanzania	1		1			
China, People's Rep. of	10	122	132	Kyrgyzstan		1	1	Thailand	1	16	17			
Colombia	1	5	6	Latvia		3	3	Togo		1	1			
Costa Rica	1		1	Lebanon	2	1	3	Trinidad & Tobago	1	2	3			
Cote d'Ivoire/Ivory Coast	1		1	Libya	1	1	2	Tunisia	1	3	4			
Croatia		2	2	Malaysia	2	1	3	Turkey	1	17	18			
Cyprus	1		1	Mexico	4	7	11	Uganda		1	1			
Dominican Republic		1	1	Morocco		1	1	Ukraine		3	3			
Ecuador		1	1	Nepal	3	2	5	United Arab Emirates	1		1			
Egypt		1	1	Netherlands	1		1	United Kingdom	3	3	6			
El Salvador	3		3	Nigeria	10	13	23	Venezuela	4	9	13			
Ethiopia		1	1	Pakistan	6	5	11	Vietnam	19	14	33			
France	1	2	3	Peru	1	1	2	Zambia	1		1			
Gabon	1	1	2	Philippines		16	16	Zimbabwe		1	1			
Optometry												0	28	28
Country	UG	G	Total	Country	UG	G	Total	Country	UG	G	Total			
Bulgaria	0	1	1	Croatia	0	1	1	Sweden	0	1	1			
Canada	0	4	4	France	0	1	1	Trinidad & Tobago	0	1	1			
Cayman Islands	0	1	1	India	0	9	9							
China	0	8	8	Philippines	0	1	1							
Pharmacy												18	86	104
Country	UG	G	Total	Country	UG	G	Total	Country	UG	G	Total			
Bangladesh		1	1	India		48	48	Qatar		1	1			
Cameroon		1	1	Iraq		1	1	Saudi Arabia		1	1			
Canada		1	1	Jordan		2	2	South Korea	6	4	10			
China, People's Rep. of	3	12	15	Kenya	2		2	Taiwan	1	4	5			
Cote d'Ivoire/Ivory Coast	1		1	Nigeria		3	3	United Kingdom		1	1			
Egypt		3	3	Philippines	1		1	Vietnam	4	3	7			
Social Work												0	7	7
Country	UG	G	Total	Country	UG	G	Total	Country	UG	G	Total			
China, People's Rep. of	0	3	3	India		1	1	Nigeria		2	2			
Hong Kong	0	1	1											
Technology												54	114	168
Country	UG	G	Total	Country	UG	G	Total	Country	UG	G	Total			
Angola	2		2	Guinea	1		1	Pakistan	1	2	3			
Azerbaijan	1	1	2	Honduras	1		1	Peru	3		3			
Belize	1		1	Hungary		1	1	Romania		1	1			
Bulgaria	1		1	India	6	74	80	Saudi Arabia	3	2	5			
Cambodia		1	1	Indonesia	2		2	South Africa	1		1			
Canada	4	2	6	Iraq		1	1	Spain	1		1			
China, People's Rep. of	1	6	7	Kazakhstan		2	2	Taiwan		2	2			
Colombia	2	1	3	Kenya	1		1	Turkey		3	3			
Ecuador	1	1	1	Malaysia	1		1	United Kingdom	1	1	2			
Egypt	1	1	1	Mauritania	1		1	Venezuela	1	3	4			
Germany		2	2	Mexico	5	1	6	Vietnam	5	2	7			
Ghana	2		2	Nepal	1		1							
Greece		1	1	Nigeria	5	3	8							
University Studies												116	0	116
Country	UG	G	Total	Country	UG	G	Total	Country	UG	G	Total			
Angola	6	0	6	Hungary	1	0	1	Poland	2	0	2			
Bangladesh	2	0	2	India	11	0	11	Russia	1	0	1			
Brazil	4	0	4	Indonesia	3	0	3	Saudi Arabia	5	0	5			
Burkina Faso	1	0	1	Ireland	1	0	1	Singapore	1	0	1			
Cameroon	1	0	1	Israel	1	0	1	South Korea	6	0	6			
Canada	4	0	4	Japan	1	0	1	Syria	1	0	1			
China, People's Rep. of	5	0	5	Kenya	3	0	3	Taiwan	2	0	2			
Colombia	3	0	3	Malaysia	1	0	1	Tanzania	2	0	2			
Cyprus	1	0	1	Morocco	2	0	2	Thailand	1	0	1			
Ecuador	1	0	1	Netherlands	1	0	1	Turkey	2	0	2			
Egypt	1	0	1	Nigeria	9	0	9	United Kingdom	1	0	1			
Gabon	1	0	1	Pakistan	9	0	9	Venezuela	5	0	5			
Germany	2	0	2	Palestinian Territories	1	0	1	Vietnam	5	0	5			
Ghana	1	0	1	Paraguay	1	0	1							
Hong Kong	2	0	2	Peru	2	0	2							

F-1 Employment Statistics: Curricular Practical Training (CPT)

Individuals on the F-1 visa have two main employment options: on-campus and off-campus employment directly related to the student's major area of study. Off campus employment requires special permission before beginning work. Curricular Practical Training (CPT) is a type of off-campus employment authorization issued by International Student and Scholar Services Office (ISSSO) in conjunction with the student's academic department. CPT authorization is required for F-1 students to engage in employment off-campus during their course of studies. Employment must be directly related to the student's major currently being pursued. There are three main types of CPT: (a) off-campus employment as part of a required course already existing in the student's curriculum, such as an internship or practicum course; (b) off-campus employment for dissertation/thesis purposes; and (c) off-campus employment with UH's Cooperative Education Program.

Type of Curricular Practical Training (CPT)	Part-Time	Full-Time	Total
Cooperative Education Program (COOP)	161	121	282
Dissertation/Thesis	16	3	19
Required Course	50	31	81
2009 Total CPT Participation	227	155	382



Country	# on CPT	Country	# on CPT	Country	# on CPT
Angola	1	Guatemala	1	Peru	2
Argentina	7	Honduras	1	Poland	2
Australia	1	Hong Kong	2	Russia	1
Brazil	2	India	87	Saudi Arabia	1
Bulgaria	3	Indonesia	4	Serbia	1
Burkina Faso	1	Iran	1	Slovenia	1
Canada	7	Japan	2	Taiwan	11
China	55	Jordan	1	Tanzania	1
Colombia	10	Kazakhstan	4	Thailand	8
Croatia	2	Kenya	5	Trinidad & Tobago	4
Denmark	1	Korea	28	Tunisia	1
Dominica	6	Lebanon	3	Turkey	1
Ecuador	1	Macedonia	3	UAE	1
Egypt	1	Malaysia	5	Ukraine	1
Ethiopia	1	Mexico	10	United Kingdom	9
Finland	3	Moldova	4	Venezuela	15
Gabon	1	Nigeria	10	Vietnam	37
Germany	1	Pakistan	6		
Ghana	1	Panama	3	Grand Total	382

F-1 Employment Statistics: Optional Practical Training (OPT)

Immediately following completion of their degree, most non-immigrant students on the F-1 visa have the option of pursuing a 12-month employment benefit. The student must apply with United States Citizenship & Immigration Services (USCIS) to request permission to work. Upon approval, the student is authorized to accept employment inside the United States that is directly related to her/his major area of study for a specified time period. This time period is referred to as Optional Practical Training (OPT). Students graduating from certain science, technology, engineering, and mathematics (STEM) disciplines designated by Department of Homeland Security may be eligible for an additional 17-month, once-in-a-lifetime, employment benefit after completing OPT. This employment benefit is referred to as a STEM Extension.

	Undergraduate(UG)	Graduate(G)	Total
Total Alumni on OPT	164	505	669
Total Alumni on STEM Extensions	12	31	43
Total Alumni on OPT & STEM Extensions	176	536	712

Country	UG	G	Total
Albania	0	1	1
Algeria	0	1	1
Angola	2	0	2
Argentina	5	3	8
Azerbaijan	0	3	3
Bangladesh	0	2	2
Belize	0	1	1
Brazil	0	3	3
Cameroon	1	2	3
Canada	5	3	8
Chile	1	0	1
China	8	73	81
Colombia	13	3	16
Czech Republic	1	0	1
Dominica	2	0	2
Dominican Republic	1	0	1
Ecuador	2	1	3
Egypt	1	2	3
El Salvador	1	0	1
Finland	1	0	1
France	0	2	2
Gabon	1	0	1
Georgia	0	1	1
Germany	4	2	6
Ghana	0	2	2
Greece	1	0	1
Guatemala	1	1	2
Hong Kong	2	2	4
Hungary	1	0	1
Iceland	2	0	2
India	5	293	298
Indonesia	4	8	12
Italy	0	1	1

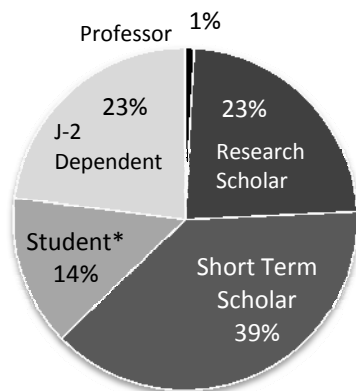
Country	UG	G	Total
Japan	6	2	8
Jordan	1	0	1
Kazakhstan	0	2	2
South Korea	11	23	34
Lebanon	5	1	6
Malaysia	9	1	10
Mexico	10	10	20
Netherlands	0	1	1
Nicaragua	2	0	2
Nigeria	4	10	14
Norway	0	1	1
Pakistan	12	6	18
Panama	1	0	1
Peru	2	1	3
Philippines	3	6	9
Poland	0	1	1
Russia	2	4	6
Saudi Arabia	1	0	1
Singapore	3	1	4
Spain	0	2	2
Sri Lanka	0	5	5
St. Lucia	1	0	1
Taiwan	4	11	15
Tanzania	1	0	1
Thailand	1	9	10
Trinidad & Tobago	0	3	3
Tunisia	1	1	2
Turkey	2	11	13
Ukraine	1	3	4
United Kingdom	8	5	13
Venezuela	9	3	12
Vietnam	11	2	13
Zambia	0	1	1

2009 Exchange Visitor Program Summary

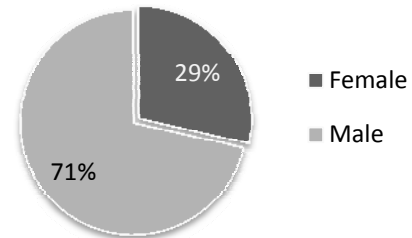
Category	2009	2008	Growth
J-1 Professor	5	0	-
J-1 Research Scholar	130	52	150.0%
J-1 Short Term Scholar	214	196	9.2%
J-1 Student*	79	44	79.5%
J-2 Dependent	128	77	66.2%
Exchange Visitor Totals	556	369	50.7%

*J-1 Student totals include exchange visitors participating in non-degree objective study at UH Language & Culture Center, UH-Clear Lake, and UH-Downtown.

Exchange Visitor Program Summary**



J-1 by Gender



Gender	2009
Female	122
Male	306
Total J-1s	428

J-1 Exchange Visitors by College

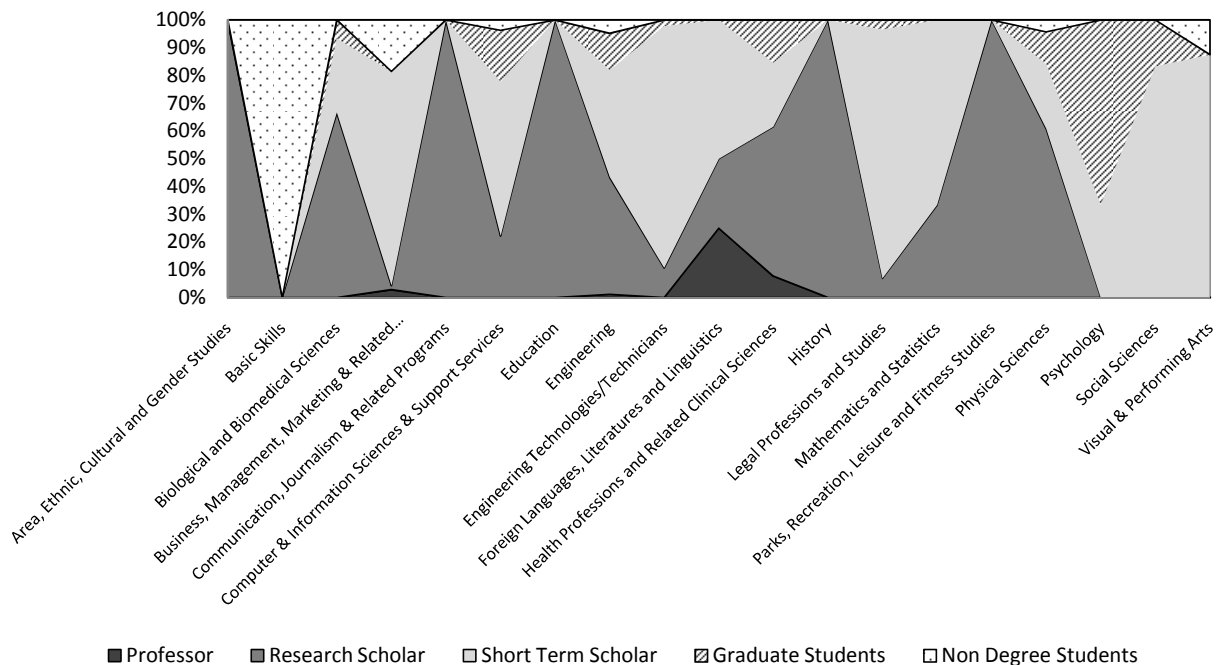
College/Department	Professor	Research Scholar	Short Term Scholar	Students		Total
				GR	Non-Degree	
Business Administration			60	1		61
Education		2				2
Educational Technology & University Outreach					7	7
Engineering	1	31	18	7	1	58
Hotel & Restaurant Management		1				1
Language & Culture Center					17	17
Law		2	27	1		30
Liberal Arts & Social Sciences	1	9	16	3	1	30
Natural Sciences & Mathematics		70	45	16	3	134
Optometry		1				1
Pharmacy	1	6	3	3		13
Technology		5	41	1		47
Texas Learning & Computation Center		1				1
University of Houston- Clear Lake		2		1	17	20
University of Houston- Victoria	2		4			6
Total J-1 Exchange Visitors	5	130	214	33	46	428

**Exchange Visitor 2009 Program Summary counts reflect active J records during 1/1/2009-12/31/2009.

2009 Exchange Visitor Country of Origin

Country	Dependents (J-2)			Students			Country [continued]	Dependents (J-2)			Students				
	Professor	Research Scholar	Short Term Scholar	Graduate	Non-Degree	Sub-Total		Professor	Research Scholar	Short Term Scholar	Graduate	Non-Degree	Sub-Total		
Angola					7	7	Lebanon		1				1		
Australia			1			1	Libya	4				4	8		
Azerbaijan				4		4	Lithuania	1			1		2		
Belarus			1			1	Malaysia				1		1		
Belgium			1			1	Mexico	3	2	2	1		8		
Brazil	6	1	12			19	Nepal	2	1				3		
Canada			1			1	Pakistan		1				1		
Chile			1			1	Palestinian Territories	1					1		
China, People's Rep.	41	3	67	146	4	1	262	Peru			1		1		
Colombia			1	2		3	Philippines		2				2		
Egypt	7				5	12	Poland		1	1			2		
France			2	11		13	Portugal		1				1		
Gabon			1			1	Russia	4	4	1			9		
Germany			2	1	1	4	Saudi Arabia	3	1				4		
Greece			2			2	South Africa				1		1		
Hong Kong			1			1	Spain	1		2			3		
Hungary				1		1	Sweden		1	2			3		
India	3		5	4		12	Switzerland			1			1		
Ireland			1			1	Taiwan	5	1	3	1	15	25		
Israel	4	1	2	2		9	Thailand			1	1		2		
Italy		1	2	8		11	Turkey	2	2		12	17	33		
Japan	7		6	2		15	Ukraine	2	2	1			5		
South Korea	32	1	15	2		50	United Kingdom		2	2			4		
Kuwait					1	1	Vietnam			1			1		
Latvia			1			1									
Grand Total									128	5	130	214	33	46	556

J-1 Exchange Visitors by Field of Study



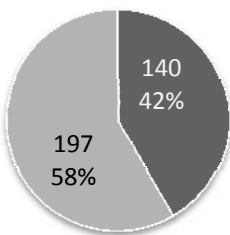
Language & Culture Center Enrollment: Fall 2009

The Language and Culture Center (LCC) located on the University of Houston campus provides a unique setting in which international students can experience life at an American university, make new friends, and learn English as a Second Language (ESL) through a variety of courses designed to help them master language skills. Services are provided to these students by LCC staff. Since 1975, LCC has provided intensive English Instruction for international students who want to study at universities in the United States or improve their English language skills to meet personal and professional goals. LCC students may substitute successful completion of level six at LCC in lieu of TOEFL scores when applying for admission to UH. Students enrolled in LCC programs are not enrolled in degree-seeking courses at UH and are therefore not included in the international student enrollment figures previously mentioned in this report. During Fall 2009, international students from 43 nations participated in LCC programs.

LCC Enrollment Composition

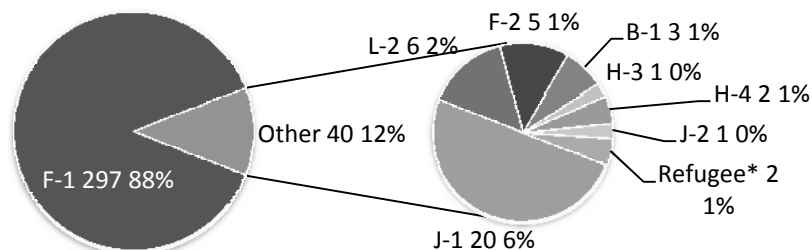
Country Name	Students	Country Name	Students	Country Name	Students
Saudi Arabia	78	Jordan	4	Iraq	1
China	53	Kazakhstan	3	Belgium	1
South Korea	26	Cameroon	3	Norway	1
Turkey	20	Equatorial Guinea	3	Serbia	1
Burkina Faso	20	Iran	2	Cambodia	1
Vietnam	19	Japan	2	Georgia	1
Angola	14	Ukraine	2	Switzerland	1
Mali	14	Gabon	2	Senegal	1
Venezuela	13	Qatar	2	Afghanistan	1
Taiwan	12	Kuwait	2	Palestinian Territories	1
Thailand	6	India	1	Armenia	1
Libya	6	Azerbaijan	1	Congo	1
Mexico	5	Morocco	1	Ivory Coast	1
Colombia	4	Israel	1		
Brazil	4	Bulgaria	1		
Total Fall 2009 LCC Enrollment					337

By Gender



■ Female ■ Male

By Visa

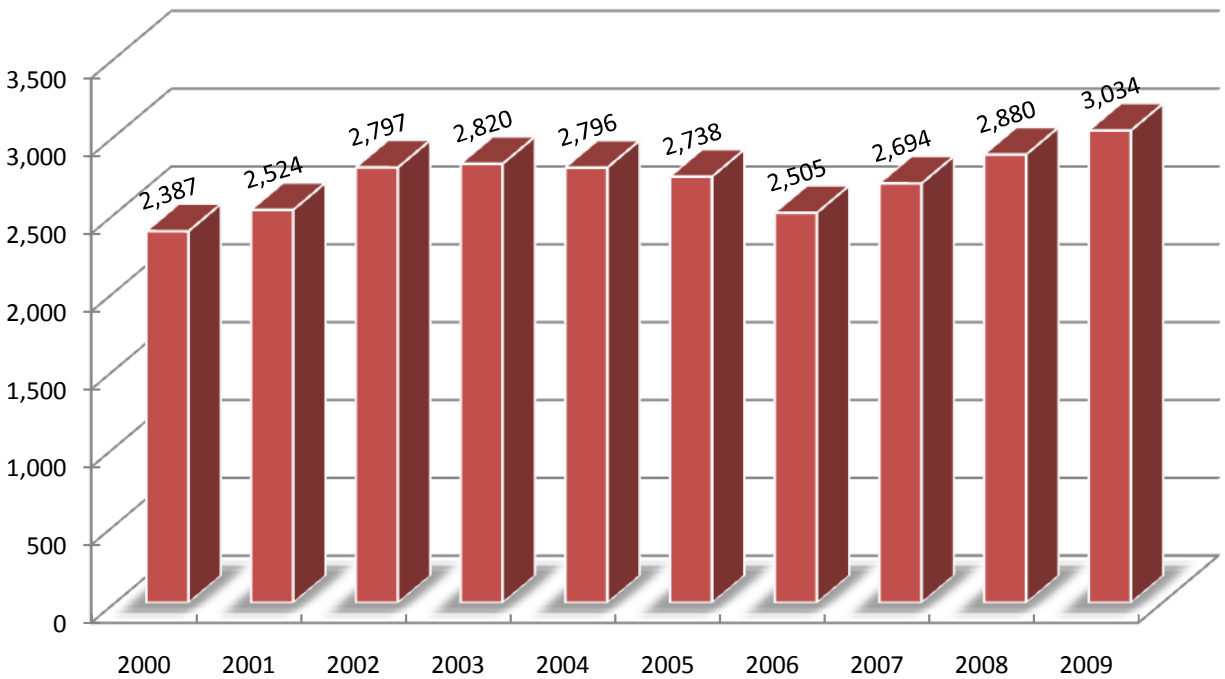


*Refugees are not included in non-immigrant totals utilized in this report.

LCC Level 6 Graduates

Country	Students	Country	Students	Country	Students
Angola	1	Jordan	1	Taiwan	1
Burkina Faso	2	Korea	2	Thailand	1
Cambodia	1	Mexico	2	Turkey	1
Cameroon	1	Saudi Arabia	2	Ukraine	1
China	2	Switzerland	1	Venezuela	2
Total LCC Graduates in Fall 2009					21

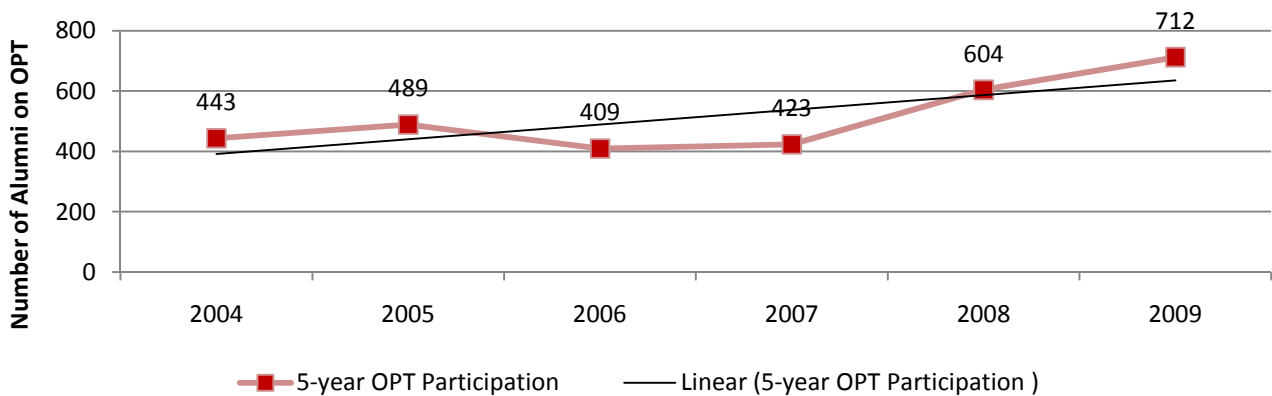
Non-Immigrant International Student Enrollment 2000-2009



Ten Year Non-Immigrant Student Enrollment at UH

Year	Total	Year	Total
2000	2,387	2005	2,738
2001	2,524	2006	2,505
2002	2,797	2007	2,694
2003	2,820	2008	2,880
2004	2,796	2009	3,034

5-year OPT Participation Trend





UNIVERSITY of **HOUSTON**

INTERNATIONAL STUDENT & SCHOLAR SERVICES OFFICE

302 Student Service Center 1 Houston, Texas , 77204-3024
Phone: (713) 743-5065 📞 Fax: (713) 743-5079 📠 <http://isso.uh.edu/>